



Preferred ordering guide for NETCONNECT

EMEA Region - Q1 2022

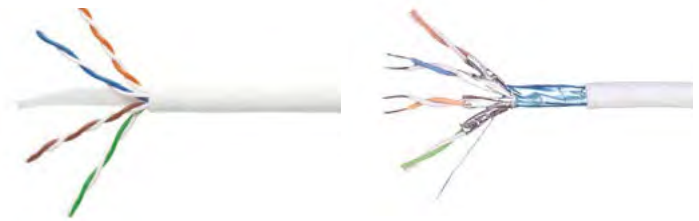
COMMSCOPE®

Contents

Copper Solutions	3
Copper Cables	3
Copper Information Outlets	4
Category 5e information outlets	4
Category 6 information outlets	4
Category 6A information outlets	6
Copper Patch Panels	8
Unshielded/Shielded	8
Punch Down	8
Panel Accessories	8
Faceplates	9
Copper Patch Cords	11
Ceiling Connector Assemblies	14
Fiber Solutions	16
Fiber optic cable	16
- Indoor cables	16
- Indoor/outdoor cables	17
- Outdoor cables	20
- Air-blown cables	22
- Fire survival cables	23
Description Key	24
EPX, HD and UD panels	25
G2 family	25
G2 Adapter packs	26
G2 splice cassettes	27
G2 modules	28
G2 wall boxes and accessories	30
EHD Fiber Solutions	31
CHD Fiber Solutions	33
Fiber connectivity	36
Fiber patch cords	36
Uniboot patch cord configurator	38
Pigtails for adapter packs	38
MPO trunk cables	39
Method B Ruggedized fanout cables	41
Method A MPO-12 array cables	42
Method B Array cords	43
ULL Array cords	44
Field Installable Products	45
QWIK-Fuse field installable connectors, tool kits and accessories	45
QWIK II field installable MPO connectors and tool kits	46
QWIK II field installable connectors and tool kits	47
Anaerobic fiber optic connectors	48
Adapters	49
Fiber cleaning, break-out kits, consumables and cable clamps	50
FiberGuide®	51
Tenio fiber closures	53
Powered fiber	54
BUDI splice with FIST	57

The CommScope NETCONNECT ordering guide for the Middle East and Africa region contains commonly ordered copper and fiber structured cabling products. This information is subject to change.

For a comprehensive, up-to-date listing of CommScope products, please go to www.commscope.com.



Category	Cable Type	CPR Rating	AWG	Jacket Material	Jacket Colour	Packaging	Material ID	Product Number
Category 5e Cables								
Cat 5e	UTP	Eca	24	LSZH	White	Box 305m	884048914/10	CS24Z3 WHT C5E 4/24 U/UTP CPK 305M
Cat 5e	SF/UTP	Eca	24	LSZH	White	500m Reel	219484-2	CS24Z1 WHT C5E 4/24 SF/UTP RL 500M
Cat 5e	F/UTP	Dca	24	LSZH	White	305m Pull-box	219420-2	CS24Z1 WHT C5E 4/24 F/UTP PB 305M
Category 6 Cables								
Cat 6	UTP	Dca	24	LSZH	White	Box 305m	884032314/10	CS34Z3 WHT C6 4/24 U/UTP CPK 305M
Cat 6	UTP	Cca	23	LSZH	White	Box 305m	884016214/10	CS34ZC WHT C6 4/23 U/UTP CPK 305M
Cat 6	UTP	B2ca	23	LSZH	White	Box 305m	884015714/10	CS34ZB WHT C6 4/23 U/UTP CPK 305M
Category 6A Cables								
Cat 6A	U/UTP	Dca	24	LSZH	White	500m Reel	884050654/16	CS41Z3 WHT C6A 4/24 U/UTP RL 500M
Cat 6A	U/UTP	Cca	24	LSZH	White	500m Reel	884064854/16	CS41ZC WHT C6A 4/24 U/UTP RL 500M
Cat 6A	U/UTP	Dca	23	LSZH	White	Box 305m	884036114/10	CS44Z3 WHT C6A 4/23 U/UTP CPK 305M
Cat 6A	U/UTP	Cca	23	LSZH	White	Box 305m	884030814/10	CS44ZC WHT C6A 4/23 U/UTP CPK 305M
Cat 6A	U/UTP	B2ca	23	LSZH	White	Box 305m	884027214/10	CS44ZB WHT C6A 4/23 U/UTP CPK 305M
Cat 6A	F/UTP	Dca	23	LSZH	White	500m Reel	884046954/16	CS44Z3 WHT C6A 4/23 F/UTP RL 500M
Cat 6A	F/UTP	Cca	23	LSZH	White	305m Reel	884024804/10	CS44ZC WHT C6A 4/23 F/UTP RL 305M
Cat 6A	F/UTP	B2ca	23	LSZH	White	305m Reel	884026704/10	CS44ZB WHT C6A 4/23 F/UTP RL 305M
Cat 6A	F/FTP	Dca	23	LSZH	White	500m Reel	884041954/16	CS44Z3 WHT C6A 4/23 F/FTP RL 500M
Cat 6A	F/FTP	Cca	23	LSZH	White	500m Reel	884035958/16	CS44ZC WHT C6A 4/23 F/FTP RL 500M
Cat 6A	F/FTP	B2ca	23	LSZH	White	500m Reel	884048458/16	CS44ZB WHT C6A 4/23 F/FTP RL 500M
Category 7 Cables								
Cat 7	F/FTP	Dca	23	LSZH	White	500m Reel	1711163-1	CS54Z3 WHT C7 4/23 F/FTP RL 500M
Cat 7	F/FTP	Cca	23	LSZH	White	500m Reel	884016558/16	CS54ZC WHT C7 4/23 F/FTP RL 500M
Cat 7	F/FTP	B2ca	23	LSZH	White	500m Reel	884046258/16	CS54ZB WHT C7 4/23 F/FTP RL 500M
Cat 7	S/FTP	Dca	23	LSZH	White	500m Reel	57893-2	C7 PR4 S/FTP XG LSRZH WHT 23 SOL 500m
Cat 7	S/FTP	Cca	23	LSZH	White	500m Reel	884021358/16	CS54ZC WHT C7 4/23 S/FTP RL 500M
Cat 7	S/FTP	B2ca	23	LSZH	White	500m Reel	884010858/16	CS54ZB WHT C7 4/23 S/FTP RL 500M
Category 7A Cables								
Cat 7A	S/FTP	Dca	23	LSZH	White	1000m Reel	1711910-1	C7A S/FTP SOLID PR4 23 LSRZH WHT 1000m
Cat 7A	S/FTP	Cca	23	LSZH	White	1000m Reel	884023938/32	CS64ZC WHT C7A 4/23 S/FTP RL 1KM
Cat 7A	S/FTP	B2ca	23	LSZH	White	1000m Reel	884019038/32	CS64ZB WHT C7A 4/23 S/FTP RL 1KM
Cat 7A	S/FTP	Dca	22	LSZH	White	1000m Reel	1499101-1	C7A PR4 S/FTP XG LSRZH WHT 22 SOL 1000m
Cat 7A	S/FTP	Cca	22	LSZH	White	500m Reel	884025858/16	CS67ZC WHT C7A 4/22 S/FTP RL 500M
Cat 7A	S/FTP	B2ca	22	LSZH	White	500m Reel	884049058/16	CS67ZB WHT C7A 4/22 S/FTP RL 500M



Category	Type	Dust Cover	Colour	Material ID	Product Number
Category 5e Unshielded (UTP) – SL Opening					
Cat 5e	UTP	no	Black	1375191-2	JACK,SL110,RJ45,CAT5E,BLK
Cat 5e	UTP	no	Alpine White	1-1375191-3	JACK,SL110,RJ45,CAT5E,A.WHT
Cat 5e	UTP	no	Almond	1375191-1	JACK,SL110,RJ45,CAT5E,L.ALD
Cat 5e	UTP	no	Grey	1375191-4	JACK,SL110,RJ45,CAT5E,GRY
Cat 5e	UTP	no	Orange	1375191-5	JACK,SL110,RJ45,CAT5E,ORG
Cat 5e	UTP	no	Blue	1375191-6	JACK,SL110,RJ45,CAT5E,BLU
Cat 5e	UTP	no	Red	1375191-7	JACK,SL110,RJ45,CAT5E,RED
Cat 5e	UTP	no	Yellow	1375191-8	JACK,SL110,RJ45,CAT5E,YEL
Cat 5e	UTP	no	Green	1375191-9	JACK,SL110,RJ45,CAT5E,GRN
Eco-friendly packaging					
Cat 5e*	UTP	no	Black	4-1375191-2	ECO SL110-5e-BLK-BULK

*Eco-friendly packaging. Does not contain single use plastics in packaging.



Category	Type	Dust Cover	Colour	Material ID	Product Number
Category 6 Unshielded (UTP) – SL Opening					
Cat 6	UTP	No	Black	1375055-2	JACK,SL110,RJ45,CAT6,BLK
Cat 6	UTP	No	Alpine White	1-1375055-3	JACK,SL110,RJ45,CAT6,A.WHT
Cat 6	UTP	No	Grey	1375055-4	JACK,SL110,RJ45,CAT6,GRY
Cat 6	UTP	No	Violet	1-1375055-0	JACK,SL110,RJ45,CAT6,VIO
Cat 6	UTP	No	Almond	1375055-1	JACK,SL110,RJ45,CAT6,L.ALD
Cat 6	UTP	No	Orange	1375055-5	JACK,SL110,RJ45,CAT6,ORG
Cat 6	UTP	No	Blue	1375055-6	JACK,SL110,RJ45,CAT6,BLU
Cat 6	UTP	No	Red	1375055-7	JACK,SL110,RJ45,CAT6,RED
Cat 6	UTP	No	Yellow	1375055-8	JACK,SL110,RJ45,CAT6,YEL
Cat 6	UTP	No	Green	1375055-9	JACK,SL110,RJ45,CAT6,GRN
Eco-friendly packaging					
Cat 6 - ECO*	UTP	No	Black	4-1375055-2	ECO SL110-6-BLK-BULK
Cat 6 - ECO*	UTP	No	Blue	4-1375055-6	ECO SL110-6-BLU-BULK
With dust cover					
Cat 6	UTP	Yes	Black	1375187-2	JACK/DC,SL110,RJ45,CAT6,BLK
Cat 6	UTP	Yes	Alpine White	1-1375187-3	JACK/DC,SL110,RJ45,CAT6,A.WHT
Cat 6	UTP	Yes	Grey	1375187-4	JACK/DC,SL110,RJ45,CAT6,GRY
Cat 6	UTP	Yes	Almond	1375187-1	JACK/DC,SL110,RJ45,CAT6,L.ALD
Cat 6	UTP	Yes	Orange	1375187-5	JACK/DC,SL110,RJ45,CAT6,ORG
Cat 6	UTP	Yes	Blue	1375187-6	JACK/DC,SL110,RJ45,CAT6,BLU
Cat 6	UTP	Yes	Red	1375187-7	JACK/DC,SL110,RJ45,CAT6,RED
Cat 6	UTP	Yes	Yellow	1375187-8	JACK/DC,SL110,RJ45,CAT6,YEL
Cat 6	UTP	Yes	Green	1375187-9	JACK/DC,SL110,RJ45,CAT6,GRN

*Eco-friendly packaging. Does not contain single use plastics in packaging.



Category	Type	Dust Cover	Colour	Material ID	Product Number
Category 6 Shielded (STP) – SL Opening					
Cat 6	STP	No	Black	2153448-2	AMP-TWIST SLX,6S,BLK
Cat 6	STP	No	Alpine White	1-2153448-3	AMP-TWIST SLX,6S, A.WHT
Cat 6	STP	No	Grey	2153448-4	AMP-TWIST SLX,6S,GY
Cat 6	STP	No	Almond	2153448-1	AMP-TWIST SLX,6S,ALD
Cat 6	STP	No	Orange	2153448-5	AMP-TWIST SLX,6S,ORG
Cat 6	STP	No	Blue	2153448-6	AMP-TWIST SLX,6S,BLU
Cat 6	STP	No	Red	2153448-7	AMP-TWIST SLX,6S,RED
Cat 6	STP	No	Yellow	2153448-8	AMP-TWIST SLX,6S,YEL
Cat 6	STP	No	Green	2153448-9	AMP-TWIST SLX,6S,GRN
Eco-friendly packaging					
Cat 6 - ECO*	STP	No	Black	4-2153448-2	ECO AMP-TWIST SLX, 6S,BLK-BULK
Cat 6 - ECO*	STP	No	Grey	4-2153448-4	ECO AMP-TWIST SLX, 6S,GY-BULK
Cat 6 - ECO*	STP	No	Alpine White	4-2153448-3	ECO AMP-TWIST SLX, 6S, A.WHT-BULK
With dust cover					
Cat 6	STP	Yes	Black	2153364-2	AMP-TWIST SLX,6S W/DC,BLK
Cat 6	STP	Yes	Alpine White	1-2153364-3	AMP-TWIST SLX,6S W/DC, A.WHT
Cat 6	STP	Yes	Grey	2153364-4	AMP-TWIST SLX,6S W/DC,GY
Cat 6	STP	Yes	Almond	2153364-1	AMP-TWIST SLX,6S W/DC,ALD
Cat 6	STP	Yes	Orange	2153364-5	AMP-TWIST SLX,6S W/DC,ORG
Cat 6	STP	Yes	Blue	2153364-6	AMP-TWIST SLX,6S W/DC,BLU
Cat 6	STP	Yes	Red	2153364-7	AMP-TWIST SLX,6S W/DC,RED
Cat 6	STP	Yes	Yellow	2153364-8	AMP-TWIST SLX,6S W/DC,YEL
Cat 6	STP	Yes	Green	2153364-9	AMP-TWIST SLX,6S W/DC,GRN
Eco-friendly packaging					
Cat 6 - ECO*	STP	Yes	Black	4-2153364-2	ECO AMP-TWIST SLX, 6S W/DC, BLK-BULK
Cat 6 - ECO*	STP	Yes	Grey	4-2153364-4	ECO AMP-TWIST SLX, 6S W/DC, GY-BULK
Cat 6 - ECO*	STP	Yes	Alpine White	4-2153364-3	ECO AMP-TWIST SLX, 6S W/DC, A.WHT-BULK

*Eco-friendly packaging. Does not contain single use plastics in packaging.



Category	Type	Dust Cover	Colour	Material ID	Product Number
Category 6A Unshielded (UTP) – SL Opening					
Cat 6A	UTP	No	Black	760241185	SL10G-BLK
Cat 6A	UTP	No	Alpine White	760241194	SL10G-A.WHT
Cat 6A	UTP	No	Grey	760241186	SL10G-GRY
Cat 6A	UTP	No	Violet	760241192	SL10G-VIO
Cat 6A	UTP	No	Light Almond	760241184	SL10G-L.ALD
Cat 6A	UTP	No	Orange	760241187	SL10G-ORG
Cat 6A	UTP	No	Blue	760241188	SL10G-BLU
Cat 6A	UTP	No	Red	760241189	SL10G-RED
Cat 6A	UTP	No	Yellow	760241190	SL10G-YEL
Cat 6A	UTP	No	Green	760241191	SL10G-GRN
Cat 6A	UTP	No	Electric Ivory	760241193	SL10G-E.IVY
Eco-friendly packaging					
Cat 6A-ECO*	UTP	No	Black	760248373	ECO SL10G-BLK-BULK
With dust cover					
Cat 6A	UTP	Yes	Black	760241197	SL10G-DC-BLK
Cat 6A	UTP	Yes	Grey	760241198	SL10G-DC-GRY
Cat 6A	UTP	Yes	Violet	760241204	SL10G-DC-VIO
Cat 6A	UTP	Yes	Alpine White	760241206	SL10G-DC-A.WHT
Cat 6A	UTP	Yes	Light Almond	760241196	SL10G-DC-L.ALD
Cat 6A	UTP	Yes	Orange	760241199	SL10G-DC-ORG
Cat 6A	UTP	Yes	Blue	760241200	SL10G-DC-BLU
Cat 6A	UTP	Yes	Red	760241201	SL10G-DC-RED
Cat 6A	UTP	Yes	Yellow	760241202	SL10G-DC-YEL
Cat 6A	UTP	Yes	Green	760241203	SL10G-DC-GRN
Cat 6A	UTP	Yes	Electric Ivory	760241205	SL10G-DC-E.IVY

*Eco-friendly packaging. Does not contain single use plastics in packaging.



Category	Type	Dust Cover	Colour	Material ID	Product Number
Category 6A Shielded (STP) – SL Opening					
Cat 6A	STP	No	Black	2153449-2	AMP-TWIST SLX,6AS,BLK
Cat 6A	STP	No	Grey	2153449-4	AMP-TWIST SLX,6AS,GY
Cat 6A	STP	No	Alpine White	1-2153449-3	AMP-TWIST SLX.6AS,A.WHT
Cat 6A	STP	No	Almond	2153449-1	AMP-TWIST SLX,6AS,ALD
Cat 6A	STP	No	Orange	2153449-5	AMP-TWIST SLX,6AS,ORG
Cat 6A	STP	No	Blue	2153449-6	AMP-TWIST SLX,6AS,BLU
Cat 6A	STP	No	Red	2153449-7	AMP-TWIST SLX,6AS,RED
Cat 6A	STP	No	Yellow	2153449-8	AMP-TWIST SLX,6AS,YEL
Cat 6A	STP	No	Green	2153449-9	AMP-TWIST SLX,6AS,GRN
Eco-friendly packaging					
Cat 6A - ECO*	STP	No	Black	4-2153449-2	ECO AMP-TWIST SLX, 6AS,BLK-BULK
Cat 6A - ECO*	STP	No	Grey	4-2153449-4	ECO AMP-TWIST SLX, 6AS,GY-BULK
Cat 6A - ECO*	STP	No	Blue	4-2153449-6	ECO AMP-TWIST SLX, 6AS,BLU-BULK
Cat 6A - ECO*	STP	No	Alpine White	5-2153449-3	ECO AMP-TWIST SLX, 6AS,A.WHT-BULK
With dust cover					
Cat 6A	STP	Yes	Black	2153365-2	AMP-TWIST SLX,6AS W/DC,BLK
Cat 6A	STP	Yes	Grey	2153365-4	AMP-TWIST SLX,6AS W/DC,GY
Cat 6A	STP	Yes	Almond	2153365-1	AMP-TWIST SLX,6AS W/DC,ALD
Cat 6A	STP	Yes	Alpine White	1-2153365-3	AMP-TWIST SLX.6AS W/DC,A.WHT
Cat 6A	STP	Yes	Orange	2153365-5	AMP-TWIST SLX,6AS W/DC,ORG
Cat 6A	STP	Yes	Blue	2153365-6	AMP-TWIST SLX,6AS W/DC,BLU
Cat 6A	STP	Yes	Red	2153365-7	AMP-TWIST SLX,6AS W/DC,RED
Cat 6A	STP	Yes	Yellow	2153365-8	AMP-TWIST SLX,6AS W/DC,YEL
Cat 6A	STP	Yes	Green	2153365-9	AMP-TWIST SLX,6AS W/DC,GRN
Eco-friendly packaging					
Cat 6A - ECO*	STP	Yes	Black	4-2153365-2	ECO AMP-TWIST SLX, 6AS W/DC,BLK-BULK
Cat 6A - ECO*	STP	Yes	Grey	4-2153365-4	ECO AMP-TWIST SLX, 6AS W/DC,GY-BULK

*Eco-friendly packaging. Does not contain single use plastics in packaging.

Category	Type	Dust Cover	Colour	Material ID	Product Description
Category 6A Shielded (STP) – Keystone Opening					
Cat 6A	STP Keystone	No	Silver	2153354-1	E Series Shielded Information outlet without dust cover, Silver - Keystone
Category 6A Unshielded (UTP) – Keystone Opening					
Cat 6A-ECO*	UTP - KEYSTONE	No	Black	760248374	ECO KJ10G-BLK-BULK

*Eco-friendly packaging. Does not contain single use plastics in packaging.

Product Number	Description
Tooling	
1725150-6	Modular Information outlet Termination SL Tool Kit with Lacing Fixture, for large cable diameter
1725150-3	Modular Information outlet Termination SL Tool Kit without Lacing Fixture
1673956-6	Modular Information outlet Lacing Fixture for SL Tool

Copper solutions

Copper Patch Panels



Rack Units	Ports	Straight/Angled	Opening	Material ID	Product Number
Unshielded (No Information Outlet)					
1U	24	Straight	SL110/SL10G	760237040	CPP-UDDM-SL-1U-24
2U	48	Straight	SL110/SL10G	760237041	CPP-UDDM-SL-2U-48
1U	24	Recessed Angled	SL110/SL10G	760237044	CPPR-UDDM-SL-1U-24
1U	24	Angled	SL110/SL10G	760237042	CPPA-UDDM-SL-1U-24
2U	48	Angled	SL110/SL10G	760237043	CPPA-UDDM-SL-2U-48
1U	24	Straight	Keystone	760237052	CPP-UDDM-KJ-1U-24

Rack Units	Ports	Straight/Angled	Opening	Material ID	Product Number
Shielded (No Information Outlet)					
1U	24	Straight	SL / SLX	760237046	CPP-SDDM-SL-1U-24
2U	48	Straight	SL / SLX	760237047	CPP-SDDM-SL-2U-48
1U	24	Recessed Angled	SL / SLX	760237051	CPPR-SDDM-SL-1U-24
2U	48	Recessed Angled	SL / SLX	760237050	CPPR-SDDM-SL-2U-48
1U	24	Angled	SL / SLX	760237048	CPPA-SDDM-SL-1U-24
2U	48	Angled	SL / SLX	760237049	CPPA-SDDM-SL-2U-48
1U	24	Straight	SL / SLX	2153437-1	-
1U	24	Straight	Keystone	2269025-1	-



Rack Units	Ports	Straight/Angled	Cable Type	Category	Material ID	Product Number
Punch Down						
1U	24	Straight	Unshielded	Cat 5e	760180000	CPP-5E-DM-1U-24
1U	24	Straight	Unshielded	Cat 6	760237024	NPP-6-DM-1U-24
1U	24	Straight	Unshielded	Cat 6A	760237032	NPP-6A-DM-1U-24



Material ID	Product Number
Panel Accessories	
760038240	HCM-19-SS-1U
1671495-1	High-Density Front-Loading CM 1U
1671495-2	High-Density Front-Loading CM 2U
2269081-1	HD FRONT-LOADING CM SHALLOW 1U
2269081-2	HD FRONT-LOADING CM SHALLOW 2U
1-1671080-2	Hi-D 2U PASS THROUGH DUCT (FRAME)
760229179	CPP-SVS-KIT



Ports	Orentation	Information Outlet Style	Labelled	Colour	Material ID
Faceplate kit					
2 port	Vertical	SL / SLX	No	Alpine White	1-2111022-3
2 port	Vertical	SL / SLX	No	Black	2111022-2
2 port	Vertical	SL / SLX	No	Electrical Ivory	1-2111022-1
2 port	Vertical	SL / SLX	No	Grey	2111022-4
2 port	Vertical	SL / SLX	No	Almond	2111022-1
Labelled					
1 port	Vertical	SL / SLX	Yes	Alpine White	1-2111008-3
1 port	Vertical	SL / SLX	Yes	Almond	2111008-1
2 port	Vertical	SL / SLX	Yes	Alpine White	1-2111009-3
2 port	Vertical	SL / SLX	Yes	Electrical Ivory	1-2111009-1
2 port	Vertical	SL / SLX	Yes	Grey	2111009-4
2 port	Vertical	SL / SLX	Yes	Almond	2111009-1
2 port	Vertical	SL / SLX	Yes	Black	2111009-2
3 port	Vertical	SL / SLX	Yes	Alpine White	1-2111010-3
3 port	Vertical	SL / SLX	Yes	Almond	2111010-1
4 port	Vertical	SL / SLX	Yes	Alpine White	1-2111011-3
4 port	Vertical	SL / SLX	Yes	Black	2111011-2
4 port	Vertical	SL / SLX	Yes	Electrical Ivory	1-2111011-1
4 port	Vertical	SL / SLX	Yes	Grey	2111011-4
4 port	Vertical	SL / SLX	Yes	Almond	2111011-1
6 port	Vertical	SL / SLX	Yes	Alpine White	1-2111012-3
6 port	Vertical	SL / SLX	Yes	Black	2111012-2
6 port	Vertical	SL / SLX	Yes	Electrical Ivory	1-2111012-1
6 port	Vertical	SL / SLX	Yes	Grey	2111012-4
6 port	Vertical	SL / SLX	Yes	Almond	2111012-1
4 port	Horizontal	SL / SLX	Yes	Alpine White	1-2111203-3
4 port	Horizontal	SL / SLX	Yes	Almond	2111203-1

Ports	Material ID	Description	Colour
British Style Faceplates			
1 port	1711301-1	SINGLE BS FACEPLATE LJ6C UNLOADED	White
2 port	1711302-1	DOUBLE BS FACEPLATE LJ6C UNLOADED	White
4 port	2153004-1	Unloaded Faceplate for 4 Modules LJ6C	White
2 port	65401812-04	Faceplate, 2-port, 1-gang, flush mount, UK style (deep), white	White
Eco-friendly packaging			
1 port	760246287	BS 50x50FP, SNGL GANG, WH, ECO BULK	White

*Eco-friendly packaging. Does not contain single use plastics in packaging.



Ports	Information Outlet Style	Angled	Shuttered	Material ID	Product Number	Colour
British Style Modules						
1 port	SL	No	No	1711348-1	UNLOADED LJ6C SNAP IN MODULE, UNSHUTTERED	White
1 port	SL	Yes	Yes	1859096-1	UNLOADED LJ6C ANGELED SNAP IN MODULE, SHUTTERED	White
1 port	SL	Yes	Yes	760253238	UNLOADED LJ6C ANGELED SNAP IN MODULE, SHUTTERED, ECO BULK PACKAGING	White
1 port	SL	Yes	Yes	65384111-05	ADAPTER KEYSTONE 45 DEG.	White



Ports	Information Outlet Style	Angled	Shuttered	Material ID	Product Number	Colour
Faceplate Kits						
1 port	SL / SLX	Yes	Yes	760245679	FP KIT, BS, 1 PORT, ANGLED SHUTTERED	White
2 port	SL / SLX	Yes	Yes	760245680	FP KIT, BS, 2 PORT, ANGLED SHUTTERED	White
1 port	universal opening	No	Yes	760249249	1 PORT FACEPLATE KIT, BS SHUTTERED	White
2 port	universal opening	No	Yes	760249251	2 PORT FACEPLATE KIT, BS SHUTTERED	White



Ports	Information Outlet Style	Angled	Shuttered	Material ID	Product Number	Colour
French Style Faceplates						
-	-	No	Yes	1-1711307-1	Faceplate Kit, French, unloaded, 45x45 mm	White



Ports	Information Outlet Style	Angled	Shuttered	Material ID	Product Number	Colour
General Style Faceplates & Modules						
1 port	SL	Yes	No	1711664-1	1 Port Angled 45x22,5 Module	White
1 port	SL	Yes	No	1711349-1	UNLOADED 45x22.5 SNAP IN MODULE	White
2 port	SL	No	Yes	1711276-1	2 PORT 45x45 SNAP IN MODULE	White



Ports	Information Outlet Style	Orientation	Colour	Material ID	Product Number
Surface Mount Module					
1 port	SL / SLX	Flat	Prowhite	760248523	Surface Mount Module, 1 port
2 port	SL / SLX	Flat	Prowhite	760248527	Surface Mount Module, 2 port
4 port	SL / SLX	Flat	Alpine White	1-1933671-3	Surface Mount Module, 4 port
6 port	SL / SLX	Flat	Alpine White	1-1933674-3	Surface Mount Module, 6 port





Category	Type	Length	Connection	Cable Type	AWG	Colour	Material ID
Category 5e - Unshielded (UTP)							
Cat 5e	UTP	1 Metre	RJ45-RJ45	Stranded	24	White	CO155E2-08M001
Cat 5e	UTP	2 Metre	RJ45-RJ45	Stranded	24	White	CO155E2-08M002
Cat 5e	UTP	3 Metre	RJ45-RJ45	Stranded	24	White	CO155E2-08M003
Cat 5e	UTP	5 Metre	RJ45-RJ45	Stranded	24	White	CO155E2-08M005
Cat 5e	UTP	7 Metre	RJ45-RJ45	Stranded	24	White	CO155E2-08M007
Cat 5e	UTP	10 Metre	RJ45-RJ45	Stranded	24	White	CO155E2-08M010

Other colours and lengths available



Category	Type	Length	Connection	Cable Type	AWG	Colour	Material ID
Category 5e - Shielded (F/UTP)							
Cat 5e	F/UTP	1 Metre	RJ45-RJ45	Stranded	26	White	CO17772-08M001
Cat 5e	F/UTP	2 Metre	RJ45-RJ45	Stranded	26	White	CO17772-08M002
Cat 5e	F/UTP	3 Metre	RJ45-RJ45	Stranded	26	White	CO17772-08M003
Cat 5e	F/UTP	5 Metre	RJ45-RJ45	Stranded	26	White	CO17772-08M005
Cat 5e	F/UTP	7 Metre	RJ45-RJ45	Stranded	26	White	CO17772-08M007
Cat 5e	F/UTP	10 Metre	RJ45-RJ45	Stranded	26	White	CO17772-08M010

Other colours and lengths available

NPC -

10 12 11

OR 0 5 0 M



Jacket Color

10	BK	Black
	BL	Blue
	GN	Green
	GY	Gray
	OR	Orange
	PK	Pink*
	RD	Red
	VT	Violet*
	WT	White
YL	Yellow	

Unit of Measurement

11	F	Foot
	M	Meter
	N	Inch
	C	Centimeter

Length

12 XXX

Cords > 1m are authorized for use in channels and are an effective standalone method used to connect active devices.

Cords < 1m are also valid elements for use in a channel or as an equipment interconnect but due to their limited length are not guaranteed to meet component compliance requirements that were developed to assess the quality of longer cords

* Not all cords come in pink and violet. Contact Your CommScope Representative for Information

Category	Type	Length	Connection	Cable Type	AWG	Colour	Material ID
Category 6 - Unshielded (UTP)							
Cat 6	UTP	1 Metre	RJ45-RJ45	Stranded	24	White	NPC06UZDB-WT001M
Cat 6	UTP	2 Metre	RJ45-RJ45	Stranded	24	White	NPC06UZDB-WT002M
Cat 6	UTP	3 Metre	RJ45-RJ45	Stranded	24	White	NPC06UZDB-WT003M
Cat 6	UTP	5 Metre	RJ45-RJ45	Stranded	24	White	NPC06UZDB-WT005M
Cat 6	UTP	7 Metre	RJ45-RJ45	Stranded	24	White	NPC06UZDB-WT007M
Cat 6	UTP	10 Metre	RJ45-RJ45	Stranded	24	White	NPC06UZDB-WT010M
Eco-friendly packaging							
Cat 6-ECO*	UTP	0.5-30 Meter	RJ45-RJ45	Stranded	24	WT,BL,GY,GN,OR,RD,YL,BK	NPP06UZDB
MiNo cords: small diameter unshielded (UTP) - outer cable diameter 3.937mm							
Cat 6	UTP	1 Metre	RJ45-RJ45	Stranded	28	White	CO166S2-08M001
Cat 6	UTP	2 Metre	RJ45-RJ45	Stranded	28	White	CO166S2-08M002
Cat 6	UTP	3 Metre	RJ45-RJ45	Stranded	28	White	CO166S2-08M003
Cat 6	UTP	5 Metre	RJ45-RJ45	Stranded	28	White	CO166S2-08M005
Cat 6	UTP	10 Metre	RJ45-RJ45	Stranded	28	White	CO166S2-08M010

*Eco-friendly packaging. Does not contain single use plastics in packaging.

Category	Type	Length	Connection	Cable Type	AWG	Colour	Material ID
Category 6 - Shielded (S/FTP)							
Cat 6	S/FTP	1 Metre	RJ45-RJ45	Stranded	26	White	NPC06SZDB-WT001M
Cat 6	S/FTP	2 Metre	RJ45-RJ45	Stranded	26	White	NPC06SZDB-WT002M
Cat 6	S/FTP	3 Metre	RJ45-RJ45	Stranded	26	White	NPC06SZDB-WT003M
Cat 6	S/FTP	5 Metre	RJ45-RJ45	Stranded	26	White	NPC06SZDB-WT005M
Cat 6	S/FTP	7 Metre	RJ45-RJ45	Stranded	26	White	NPC06SZDB-WT007M
Cat 6	S/FTP	10 Metre	RJ45-RJ45	Stranded	26	White	NPC06SZDB-WT010M
Eco-friendly packaging							
Cat 6-ECO*	S/FTP	0.5 - 30 Meter	RJ45-RJ45	Stranded	26	WT,BL,GY,GN,OR,RD,YL,BK	NPP06SZDB

*Eco-friendly packaging. Does not contain single use plastics in packaging.

Other colours available on request



Category	Type	Length	Connection	Cable Type	AWG	Colour	Material ID
Category 6A - Unshielded (UTP)							
Cat 6A	UTP	1 Metre	RJ45-RJ45	Solid	24	White	NPC6AUZDB-WT001M
Cat 6A	UTP	2 Metre	RJ45-RJ45	Solid	24	White	NPC6AUZDB-WT002M
Cat 6A	UTP	3 Metre	RJ45-RJ45	Solid	24	White	NPC6AUZDB-WT003M
Cat 6A	UTP	5 Metre	RJ45-RJ45	Solid	24	White	NPC6AUZDB-WT005M
Cat 6A	UTP	7 Metre	RJ45-RJ45	Solid	24	White	NPC6AUZDB-WT007M
Cat 6A	UTP	10 Metre	RJ45-RJ45	Solid	24	White	NPC6AUZDB-WT010M
Eco-friendly packaging							
Cat 6A-ECO*	UTP	0.5 - 30 Meter	RJ45-RJ45	Solid	24	WT,BL,GY,GN,OR,RD,YL,BK	NPP6AUZDB
MiNo cords: small diameter unshielded (UTP) - outer cable diameter 4.95mm							
Cat 6A	UTP	1 Metre	RJ45-RJ45	Solid	28	White	CO199K2-08M001
Cat 6A	UTP	2 Metre	RJ45-RJ45	Solid	28	White	CO199K2-08M002
Cat 6A	UTP	3 Metre	RJ45-RJ45	Solid	28	White	CO199K2-08M003
Cat 6A	UTP	5 Metre	RJ45-RJ45	Solid	28	White	CO199K2-08M005
Cat 6A	UTP	10 Metre	RJ45-RJ45	Solid	28	White	CO199K2-08M010

*Eco-friendly packaging. Does not contain single use plastics in packaging.



Category	Type	Length	Connection	Cable Type	AWG	Colour	Material ID
Category 6A - Shielded (S/FTP)							
Cat 6A	S/FTP	1 Metre	RJ45-RJ45	Stranded	26	White	NPC6ASZDB-WT001M
Cat 6A	S/FTP	2 Metre	RJ45-RJ45	Stranded	26	White	NPC6ASZDB-WT002M
Cat 6A	S/FTP	3 Metre	RJ45-RJ45	Stranded	26	White	NPC6ASZDB-WT003M
Cat 6A	S/FTP	5 Metre	RJ45-RJ45	Stranded	26	White	NPC6ASZDB-WT005M
Cat 6A	S/FTP	7 Metre	RJ45-RJ45	Stranded	26	White	NPC6ASZDB-WT007M
Cat 6A	S/FTP	10 Metre	RJ45-RJ45	Stranded	26	White	NPC6ASZDB-WT010M
Eco-friendly packaging							
Cat 6A-ECO*	S/FTP	0.5-30 Meter	RJ45-RJ45	Stranded	26	WT,BL,GY,GN,OR,RD,YL,BK	NPP6ASZDB

*Eco-friendly packaging. Does not contain single use plastics in packaging.

Other colours available on request



Material ID	Description	Colour
Unshielded Ceiling Connector Assembly (CCA) without cordage		
760234921	Unshielded Ceiling Connector Assembly (CCA) without cordage	White
760244061	Unshielded Ceiling Connector Assembly (CCA) without cordage	Black



Material ID	Description	Category	Type	Length	Connection	Conductor Type	Colour Cordage
Unshielded Ceiling Connector Assembly (CCA) with patchcords							
COP3JP2-88F002	CCA-6-L-WH-2FT	Cat 6	U/UTP	2 ft	CCA White to RJ45	Solid	White
COP3JP2-88F003	CCA-6-L-WH-3FT	Cat 6	U/UTP	3 ft	CCA White to RJ45	Solid	White
COP3JP2-88F007	CCA-6-L-WH-7FT	Cat 6	U/UTP	7 ft	CCA White to RJ45	Solid	White
COP3JP2-88F011	CCA-6-L-WH-11FT	Cat 6	U/UTP	11 ft	CCA White to RJ45	Solid	White
COP3JP2-88F015	CCA-6-L-WH-15FT	Cat 6	U/UTP	15 ft	CCA White to RJ45	Solid	White
COP3JP2-88F020	CCA-6-L-WH-20FT	Cat 6	U/UTP	20 ft	CCA White to RJ45	Solid	White
COP3JP2-88F025	CCA-6-L-WH-25FT	Cat 6	U/UTP	25 ft	CCA White to RJ45	Solid	White
COP3JP2-88F030	CCA-6-L-WH-30FT	Cat 6	U/UTP	30 ft	CCA White to RJ45	Solid	White
COP3JP2-88F040	CCA-6-L-WH-40FT	Cat 6	U/UTP	40 ft	CCA White to RJ45	Solid	White
COP3JP2-88F050	CCA-6-L-WH-50FT	Cat 6	U/UTP	50 ft	CCA White to RJ45	Solid	White
COP3JQ2-88F002	CCA-6A-L-WH-2FT	Cat 6A	U/UTP	2 ft	CCA White to RJ45	Solid	White
COP3JQ2-88F003	CCA-6A-L-WH-3FT	Cat 6A	U/UTP	3 ft	CCA White to RJ45	Solid	White
COP3JQ2-88F007	CCA-6A-L-WH-7FT	Cat 6A	U/UTP	7 ft	CCA White to RJ45	Solid	White
COP3JQ2-88F011	CCA-6A-L-WH-11FT	Cat 6A	U/UTP	11 ft	CCA White to RJ45	Solid	White
COP3JQ2-88F015	CCA-6A-L-WH-15FT	Cat 6A	U/UTP	15 ft	CCA White to RJ45	Solid	White
COP3JQ2-88F020	CCA-6A-L-WH-20FT	Cat 6A	U/UTP	20 ft	CCA White to RJ45	Solid	White
COP3JQ2-88F025	CCA-6A-L-WH-25FT	Cat 6A	U/UTP	25 ft	CCA White to RJ45	Solid	White
COP3JQ2-88F030	CCA-6A-L-WH-30FT	Cat 6A	U/UTP	30 ft	CCA White to RJ45	Solid	White
COP3JQ2-88F040	CCA-6A-L-WH-40FT	Cat 6A	U/UTP	40 ft	CCA White to RJ45	Solid	White
COP3JQ2-88F050	CCA-6A-L-WH-50FT	Cat 6A	U/UTP	50 ft	CCA White to RJ45	Solid	White



Material ID	Description	Colour
Shielded Ceiling Connector assembly (CCA) without cordage		
760250028	Shielded Ceiling Connector Assembly (CCA) without cordage. Pack of 5 units	White

Material ID	Description	Category	Type	Length	Connection	Conductor Type	Colour Cordage
Shielded Ceiling Connector Assembly (CCA) with patchcords							
COP1KZ2-88F003	SCCA-6A-L-WH-2FT	Cat 6A	F/UTP	2 ft	CCA White to RJ45	Solid	White
COP1KZ2-88F003	SCCA-6A-L-WH-3FT	Cat 6A	F/UTP	3 ft	CCA White to RJ45	Solid	White
COP1KZ2-88F007	SCCA-6A-L-WH-7FT	Cat 6A	F/UTP	7 ft	CCA White to RJ45	Solid	White
COP1KZ2-88F011	SCCA-6A-L-WH-11FT	Cat 6A	F/UTP	11 ft	CCA White to RJ45	Solid	White
COP1KZ2-88F015	SCCA-6A-L-WH-15FT	Cat 6A	F/UTP	15 ft	CCA White to RJ45	Solid	White
COP1KZ2-88F020	SCCA-6A-L-WH-20FT	Cat 6A	F/UTP	20 ft	CCA White to RJ45	Solid	White
COP1KZ2-88F025	SCCA-6A-L-WH-25FT	Cat 6A	F/UTP	25 ft	CCA White to RJ45	Solid	White
COP1KZ2-88F030	SCCA-6A-L-WH-30FT	Cat 6A	F/UTP	30 ft	CCA White to RJ45	Solid	White
COP1KZ2-88F040	SCCA-6A-L-WH-40FT	Cat 6A	F/UTP	40 ft	CCA White to RJ45	Solid	White
COP1KZ2-88F050	SCCA-6A-L-WH-50FT	Cat 6A	F/UTP	50 ft	CCA White to RJ45	Solid	White

Fiber solutions



Materia ID	Product Number	Fiber Count	Single/ Multimode	Fiber Type	Jacket Material	CPR rating	Subclass	Color	Gell Filled
Indoor Distribution Cable, 900μ, dry									
760248868*	N-006-DS-5G-FSULM/B2	6	MM	OM5	LSZH	B2ca	s1a d1 a1	Lime	No
760248870*	N-012-DS-5G-FSULM/B2	12	MM	OM5	LSZH	B2ca	s1a d1 a1	Lime	No
760241771*	N-024-DS-5G-FSULM/B2	24	MM	OM5	LSZH	B2ca	s1a d1 a1	Lime	No
760231613*	N-048-DS-5G-FMULM/C	48	MM	OM5	LSZH	Cca	s1b d1 a1	Lime	No
Indoor Distribution Cable, 900μ, dry									
760248864*	N-006-DS-5K-FSUAQ/B2	6	MM	OM4	LSZH	B2ca	s1a, d1, a1	Aqua	No
760248866*	N-012-DS-5K-FSUAQ/B2	12	MM	OM4	LSZH	B2ca	s1a, d1, a1	Aqua	No
760241769*	N-024-DS-5K-FSUAQ/B2	24	MM	OM4	LSZH	B2ca	s1a, d1, a1	Aqua	No
760069831*	N-048-DS-5K-FMUAQ/C	48	MM	OM4	LSZH	Cca	s1a, d1, a1	Aqua	No
Indoor Distribution Cable, 900μ, dry									
760248860*	N-006-DS-5L-FSUAQ/B2	6	MM	OM3	LSZH	B2ca	s1a, d1, a1	Aqua	No
760248862*	N-012-DS-5L-FSUAQ/B2	12	MM	OM3	LSZH	B2ca	s1a, d1, a1	Aqua	No
760241767*	N-024-DS-5L-FSUAQ/B2	24	MM	OM3	LSZH	B2ca	s1a, d1, a1	Aqua	No
700211121*	N-048-DS-5L-FMUAQ/C	48	MM	OM3	LSZH	Cca	s1a, d1, a1	Aqua	No
Indoor Distribution Cable, 900μ, dry									
760248872*	N-006-DS-8W-FSUYL/B2	6	SM	OS2	LSZH	B2ca	s1a, d1, a1	Yellow	No
760248874*	N-012-DS-8W-FSUYL/B2	12	SM	OS2	LSZH	B2ca	s1a, d1, a1	Yellow	No
760241765*	N-024-DS-8W-FSUYL/B2	24	SM	OS2	LSZH	B2ca	s1a, d1, a1	Yellow	No
760004291*	N-048-DS-8W-FMUYL/C	48	SM	OS2	LSZH	Cca	s1a, d1, a1	Yellow	No



Materia ID	Product Number	Fiber Count	Single/ Multimode	Fiber Type	Jacket Material	CPR rating	Subclass	Color	Gell Filled
Indoor Stranded Loose Tube, Microsheath, 250μ, dry									
760248051*	L-012-LN-5K-M12AQ/14D/GY/C	12	MM	OM4	LSZH	Cca	s1a, d0, a2	Aqua	No
760246170*	L-024-LN-5K-M12AQ/14D/GY/C	24	MM	OM4	LSZH	Cca	s1a, d0, a2	Aqua	No
760248052*	L-048-LN-5K-M12AQ/14D/GY/C	48	MM	OM4	LSZH	Cca	s1a, d0, a2	Aqua	No
760251608*	L-096-LN-5K-M12AQ/14D/GY/C	96	MM	OM4	LSZH	Cca		Aqua	No
760251607*	L-144-LN-5K-M12AQ/14D/GY/C	144	MM	OM4	LSZH	Cca		Aqua	No
Indoor Stranded Loose Tube, Microsheath, 250μ, dry									
760245022*	L-012-LN-8F-M12YL/14D/GY/C	12	SM	OS2	LSZH	Cca	s1a, d0, a2	Yellow	No
760245021*	L-024-LN-8F-M12YL/14D/GY/C	24	SM	OS2	LSZH	Cca	s1a, d0, a2	Yellow	No
760245020*	L-048-LN-8F-M12YL/14D/GY/C	48	SM	OS2	LSZH	Cca	s1a, d0, a1	Yellow	No
760251605*	L-096-LN-8F-M12YL/14D/GY/C	96	SM	OS2	LSZH	Cca		Yellow	No
760243186*	L-144-LN-8F-M12YL/14D/GY/C	144	SM	OS2	LSZH	Cca	s1a, d0, a1	Yellow	No

* Made in Europe

Fiber solutions



Materia ID	Product Number	Fiber Count	Single/ Multimode	Fiber Type	Jacket Material	CPR rating	Subclass	Color	Gel Filled
Indoor/Outdoor Stranded Loose Tube, Non-Armored, Dry, High Tensile Strength, rodent resistant									
760242817	C-006-LN-5K-F06BK/25D/HTS/B2	6	MM	OM4	LSZH, UV resistant	B2ca	s1a, d0, a1	Black	No
760242818	C-012-LN-5K-F12BK/25D/HTS/B2	12	MM	OM4	LSZH, UV resistant	B2ca	s1a, d0, a1	Black	No
760242819	C-024-LN-5K-F12BK/25D/HTS/B2	24	MM	OM4	LSZH, UV resistant	B2ca	s1a, d0, a1	Black	No
760242820	C-048-LN-5K-F12BK/25D/HTS/C	48	MM	OM4	LSZH, UV resistant	Cca	s1a, d0, a1	Black	No
760243517	C-006-LN-8W-F06BK/25D/HTS/B2	6	SM	OS2	LSZH, UV resistant	B2ca	s1a, d0, a1	Black	No



Materia ID	Product Number	Fiber Count	Single/ Multimode	Fiber Type	Jacket Material	CPR rating	Subclass	Color	Gel Filled
Indoor/Outdoor Stranded Loose Tube, Non-Armored, Gel, High Tensile Strength, rodent resistant									
760243322*	C-012-LN-5K-M12BK/20G/HTS/D	12	MM	OM4	LSZH	Dca	s2, d0, a1	Black	Yes
760243325*	C-024-LN-5K-M12BK/20G/HTS/D	24	MM	OM4	LSZH	Dca	s2, d0, a1	Black	Yes
760245927*	C-048-LN-5K-M12BK/20G/HTS/D	48	MM	OM4	LSZH	Dca	s3, d0, a1	Black	Yes
760243324*	C-012-LN-8W-M12BK/20G/HTS/D	12	SM	OS2	LSZH	Dca	s2, d0, a1	Black	Yes
760243327*	C-024-LN-8W-M12BK/20G/HTS/D	24	SM	OS2	LSZH	Dca	s2, d0, a1	Black	Yes
760243331*	C-048-LN-8W-M12BK/20G/HTS/D	48	SM	OS2	LSZH	Dca	s3, d0, a1	Black	Yes

* Made in Europe

Fiber solutions



Materia ID	Product Number	Fiber Count	Single/ Multimode	Fiber Type	Jacket Material	CPR rating	Subclass	Color	Gell Filled
Indoor/Outdoor Central Tube, Non-Armored, rodent resistant									
2-599615-2*	C-006-CN-5K-M06AQ/28D/GY/D	6	MM	OM4	ULSZH	Dca	s2, d2, a1	Aqua	No
2-599617-2*	C-012-CN-5K-M12AQ/28D/GY/D	12	MM	OM4	ULSZH	Dca	s2, d2, a1	Aqua	No
2-1716001-2*	C-024-CN-5K-M24AQ/40G/GY/D	24	MM	OM4	ULSZH	Dca	s2, d2, a1	Aqua	Yes
Indoor/Outdoor Stranded Loose Tube, Non-Armored, Dry									
2-599615-4*	C-006-CN-8W-M06YL/28D/GY/D	6	SM	OS2	ULSZH	Dca	s2, d2, a1	Yellow	No
2-599617-4*	C-012-CN-8W-M12YL/28D/GY/D	12	SM	OS2	ULSZH	Dca	s2, d2, a1	Yellow	No
2-1716001-4*	C-024-CN-8W-M24YL/40G/GY/D	24	SM	OS2	ULSZH	Dca	s2, d2, a1	Yellow	Yes



Materia ID	Product Number	Fiber Count	Single/ Multimode	Fiber Type	Jacket Material	CPR rating	Subclass	Color	Gell Filled
Indoor/Outdoor Stranded Loose Tube, Non-Armored, Dry									
760242806	C-012-LN-5K-F12BK/25D/B2	12	MM	OM4	LSZH	B2ca	s1a d0 a1	Black	No
760242807	C-024-LN-5K-F12BK/25D/B2	24	MM	OM4	LSZH	B2ca	s1a d0 a1	Black	No
1-599619-2*	C-024-LN-5K-M12AQ/28D/E	24	MM	OM4	LSZH	Eca		Aqua	No
Indoor/Outdoor Stranded Loose Tube, Non-Armored, Dry									
760242569	C-006-LN-8W-M06BK/25D/B2	6	SM	OS2	LSZH	B2ca	s1a d0 a1	Black	No
760242571	C-012-LN-8W-M12BK/25D/B2	12	SM	OS2	LSZH	B2ca	s1a d0 a1	Black	No
760242572	C-024-LN-8W-M12BK/25D/B2	24	SM	OS2	LSZH	B2ca	s1a d0 a1	Black	No
2-599619-4*	C-024-LN-8W-M12YL/28D/E	24	SM	OS2	LSZH	Eca		Yellow	No

* Made in Europe

Fiber solutions



Materia ID	Product Number	Fiber Count	Single/ Multimode	Fiber Type	Jacket Material	CPR rating	Subclass	Color	Gell Filled
Indoor/Outdoor Stranded Loose Tube, Dry, Armored									
760218529	Z-012-LA-5K-F12BK/25D/C	12	MM	OM4	LSZH, UV resistant	Cca	s1b, d2, a1	Black	No
760239011	Z-024-LA-5K-F12BK/25D/C	24	MM	OM4	LSZH, UV resistant	Cca	s1b, d2, a1	Black	No
760154963	Z-012-LA-8W-F12BK/25D/C	12	SM	OS2	LSZH, UV resistant	Cca	s1b, d2, a1	Black	No
760154971	Z-024-LA-8W-F12BK/25D/C	24	SM	OS2	LSZH, UV resistant	Cca	s1b, d2, a1	Black	No
760154997	Z-048-LA-8W-F12BK/25D/C	48	SM	OS2	LSZH, UV resistant	Cca	s1b, d2, a1	Black	No
760155010	Z-096-LA-8W-F12BK/25D/C	96	SM	OS2	LSZH, UV resistant	Cca	s1b, d2, a1	Black	No
760155028	Z-144-LA-8W-F12BK/25D/C	144	SM	OS2	LSZH, UV resistant	Cca	s1b, d2, a1	Black	No

Materia ID	Product Number	Fiber Count	Single/ Multimode	Fiber Type	Jacket Material	CPR rating	Subclass	Color	Gell Filled
Indoor/Outdoor Stranded Loose Tube, Gel, Armored									
760243285*	C-012-LA-5K-M12BK/20G/B	12	MM	OM4	LSZH, UV resistant	B2ca	s1a, d0, a1	Black	Yes
760243287*	C-024-LA-5K-M12BK/20G/C	24	MM	OM4	LSZH, UV resistant	Cca	s2, d2, a1	Black	Yes
760241035*	C-012-LA-8W-M12BK/20G/B	12	SM	OS2	LSZH, UV resistant	B2ca	s1a, d0, a1	Black	Yes
760241036*	C-024-LA-8W-M12BK/20G/C	24	SM	OS2	LSZH, UV resistant	Cca	s2, d2, a1	Black	Yes

Materia ID	Product Number	Fiber Count	Single/ Multimode	Fiber Type	Jacket Material	CPR rating	Subclass	Color	Gell Filled
Indoor/Outdoor Central Tube, gel, GRP Armored									
2-599169-4*	C-006-CA-8W-M06YL/28G/GRP/D	6	SM	OS2	ULSZH	Dca	s2, d2, a1	Yellow	Yes
2-599172-4*	C-012-CA-8W-M12YL/28G/GRP/D	12	SM	OS2	ULSZH	Dca	s2, d2, a1	Yellow	Yes

Materia ID	Product Number	Fiber Count	Single/ Multimode	Fiber Type	Jacket Material	CPR rating	Subclass	Color	Gell Filled
Indoor/Outdoor Stranded Loose Tube, gel, GRP Armored									
2-599175-4*	C-024-LA-8W-M12YL/28G/GRP/E	24	SM	OS2	ULSZH	Eca		Yellow	Yes
2-599613-4*	C-048-LA-8W-M12YL/28G/GRP/E	48	SM	OS2	ULSZH	Eca		Yellow	Yes
2-1716383-4*	C-096-LA-8W-M12YL/28G/GRP/E	96	SM	OS2	ULSZH	Eca		Yellow	Yes

* Made in Europe

Fiber solutions



Materia ID	Product Number	Fiber Count	Single/ Multimode	Fiber Type	Jacket Material	Color	Gel filled
Outdoor Central Tube, gel, CST armoured							
2-599682-4*	O-006-CA-8W-M06BK/28G/GY/HD	6	SM	OS2	HDPE	Black	Yes
2-599683-4*	O-012-CA-8W-M12BK/28G/GY/HD	12	SM	OS2	HDPE	Black	Yes
2-599690-4*	O-024-CA-8W-M24BK/40G/GY/HD	24	SM	OS2	HDPE	Black	Yes



Materia ID	Product Number	Fiber Count	Single/ Multimode	Fiber Type	Jacket Material	Color	Gel filled
Outdoor Stranded Loose Tube, gel, non-armored, High Tensile Strength							
760244889*	O-012-LN-8W-M12NS/20G/HTS	12	SM	OS2	PE	Black	Yes
760244890*	O-024-LN-8W-M12NS/20G/HTS	24	SM	OS2	PE	Black	Yes
760244891*	O-048-LN-8W-M12NS/20G/HTS	48	SM	OS2	PE	Black	Yes
760244893*	O-096-LN-8W-M12NS/20G/HTS	96	SM	OS2	PE	Black	Yes
760244894*	O-144-LN-8W-M12NS/20G/HTS	144	SM	OS2	PE	Black	Yes



Materia ID	Product Number	Fiber Count	Single/ Multimode	Fiber Type	Jacket Material	Color	Gel filled
Outdoor Stranded Loose Tube, gel, non-armored							
760241056*	O-012-LN-8W-M12NS/20G/BK	12	SM	OS2	PE	Black	Yes
760241057*	O-024-LN-8W-M12NS/20G/BK	24	SM	OS2	PE	Black	Yes
760241058*	O-048-LN-8W-M12NS/20G/BK	48	SM	OS2	PE	Black	Yes
760241060*	O-096-LN-8W-M12NS/20G/BK	96	SM	OS2	PE	Black	Yes
760241061*	O-144-LN-8W-M12NS/20G/BK	144	SM	OS2	PE	Black	Yes

* Made in Europe

Fiber solutions



Materia ID	Product Number	Fiber Count	Single/ Multimode	Fiber Type	Jacket Material	Color	Gel filled
Outdoor Stranded Loose Tube, dry, armoured							
760053280	D-012-LA-8W-F12NS	12	SM	OS2	PE	Black	No
760053298	D-024-LA-8W-F12NS	24	SM	OS2	PE	Black	No
760053314	D-048-LA-8W-F12NS	48	SM	OS2	PE	Black	No
760053348	D-096-LA-8W-F12NS	96	SM	OS2	PE	Black	No
760053355	D-144-LA-8W-F12NS	144	SM	OS2	PE	Black	No



Materia ID	Product Number	Fiber Count	Single/ Multimode	Fiber Type	Jacket Material	Color	Gel filled
Outdoor Stranded Loose Tube, dry, non-armoured							
760053843	D-012-LN-8W-F12NS	12	SM	OS2	PE	Black	No
760053850	D-024-LN-8W-F12NS	24	SM	OS2	PE	Black	No
760053876	D-048-LN-8W-F12NS	48	SM	OS2	PE	Black	No
760053900	D-096-LN-8W-F12NS	96	SM	OS2	PE	Black	No
760053918	D-144-LN-8W-F12NS	144	SM	OS2	PE	Black	No



Materia ID	Product Number	Fiber Count	Single/ Multimode	Fiber Type	Jacket Material	Color	Gel filled
Blown Micro-Duct Cable - Stranded Loose Tube							
760249408*	B-006-LN-5K-M06NS/15G	6	MM	OM4	HDPE	Black	Yes
760249409*	B-012-LN-5K-M12NS/15G	12	MM	OM4	HDPE	Black	Yes
760249410*	B-024-LN-5K-M12NS/15G	24	MM	OM4	HDPE	Black	Yes
760249411*	B-048-LN-5K-M12NS/15G	48	MM	OM4	HDPE	Black	Yes
760244985*	B-012-LN-8W-M12NS/15G	12	SM	OS2	HDPE	Black	Yes
760244986*	B-024-LN-8W-M12NS/15G	24	SM	OS2	HDPE	Black	Yes
760244988*	B-048-LN-8W-M12NS/15G	48	SM	OS2	HDPE	Black	Yes
760244991*	B-096-LN-8W-M12NS/15G	96	SM	OS2	HDPE	Black	Yes
760244992*	B-144-LN-8W-M12NS/15G	144	SM	OS2	HDPE	Black	Yes

* Made in Europe

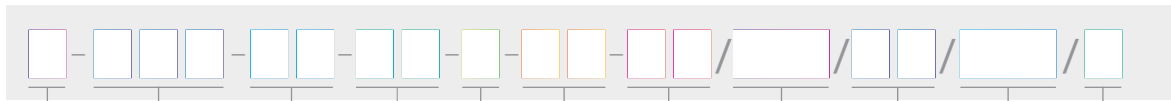


Materia ID	Product Number	Fiber Count	Single/ Multimode	Fiber Type	Jacket Material	Duration (min)	Color	Gell Filled
Fire Survival Cable - Stranded Loose Tube Cable, CST Armored								
760250073*	C-012-LA-5K-M12BK/25G/GY/FS	12	MM	OM	LSZH	90	Black	Yes
760250074*	C-024-LA-5K-M12BK/25G/GY/FS	24	MM	OM4	LSZH	90	Black	Yes
Fire Survival Cable - Stranded Loose Tube Cable, CST Armored								
760250067*	C-012-LA-5L-M12BK/25G/GY/FS	12	MM	OM3	LSZH	90	Black	Yes
760250068*	C-024-LA-5L-M12BK/25G/GY/FS	24	MM	OM3	LSZH	90	Black	Yes
Fire Survival Cable - Stranded Loose Tube Cable, CST Armored								
760245384*	C-012-LA-8W-M12BK/25G/GY/FS	12	SM	OS2	LSZH	90	Black	Yes
760245383*	C-024-LA-8W-M12BK/25G/GY/FS	24	SM	OS2	LSZH	90	Black	Yes



Materia ID	Product Number	Fiber Count	Single/ Multimode	Fiber Type	Jacket Material	Duration (min)	Color	Gell Filled
Fire Survival Cable - Central Tube Cable, dual jacket/Single CST Armored								
2-1716218-2*	C-006-L2-5K-M06BK/40G/GY/FS	6	MM	OM	LSZH	120	Black	Yes
Fire Survival Cable - Central Tube Cable, dual jacket/Single CST Armored								
760248775*	C-012-L2-8W-M12RD/40G/GY/FS	12	SM	OS2	LSZH	120	Red	Yes
2-1716216-4*	C-024-L2-8W-M24BK/40G/GY/FS	24	SM	OS2	LSZH	120	Black	Yes

* Made in Europe



Cable family

B	Micro duct Cable for Air-Blown Installation
C	In/Out Zero Halogen, CPR-only flame rated
D	Outdoor Arid Core Gel-Free Tubes
L	Indoor Zero Halogen, CPR-only flame rated
N	Indoor Zero Halogen, Dual listed
O	Outdoor Arid Core Gel-Filled Tubes
P	Plenum – Not for use in Europe
R	Riser – Not for use in Europe
Z	In/Out Zero Halogen, Dual listed

Fiber count

001-999	Fiber count in the cable. A value of "002" means 2 fibers, "048" means 48 fibers. Valid fiber counts: 002, 004, 006, 008, 012, 024, 036, 048, 72, 96, 144, 288.
---------	---

Cable construction

LN	Stranded Loose Tube All-Dielectric
LA	Stranded Loose Tube CST Armored
CN	Central Tube All-Dielectric
CA	Central Tube Armored
DN	Drop Dielectric
RD	Retractable Dielectric
DS	Distribution Cable
L2	Dual jacket, Single Armored

Fiber type

5L	OM3
5K	OM4
5G	OM5
8W	G.652.D /G.657.A1
8F	G.657.A1
RB	Matrix Flat Ribbon
RR	Rollable Ribbon

Unit of measure

F	Marked in feet
M	Marked in meters
X	Special print

Subunit fiber count

12	"12" means 12 fiber per sub unit (tube).
----	--

Trace Stripe color or jacket color

NS	No Stripe
3G	3 Green Stripes
BL	Blue
OR	Orange
GR	Green
BR	Brown
SL	Slate
WH	White
RD	Red
BK	Black
YL	Yellow
VI	Violet
RS	Rose
AQ	Aqua

Tube size and type

15G	1.50 mm Gel-Filled / B-LN cable 250µ
17T200	1.70 mm Gel-filled / B-LN cable 200µ
14D	1.40 mm Micro sheath cable
16G	1.60 mm Gel-Filled / B-LN cable
25D	2.50 mm Gel-Free
20G	2.00 mm Gel-Filled
25G	2.50 mm Gel-Filled
28D	2.80 mm Gel-Free
28G	2.80 mm Gel-Filled
40G	4.00 mm Gel-Filled / Central Tube

CPR rating

B	Bca rated cable
C	Cca rated cable
D	Dca rated cable
E	Eca rated cable

Special cable construction

HTS	High Tensile Strength
GY	Glass Yarn Strength Elements
AY	Aramid Yarns Strength Elements
GRP	GRP Rod Dielectric Armored
FS	Fire Survival

Specialty material jackets

AJ	Alternative Jacket (Rodent Resistant)
HD	High Density Polyethylene
PA	Nylon Jacket

Please note, not all combinations of the above will be available.

Fiber solutions

EPX, HD and UD Panels

The EPX, HD and UD fiber panels support the G2 style module and adapter panels, which are backwards compatible with previous hardware such as the InstaPATCH360 and 360G2 fiber panels.

The EPX panel is a low cost panel available in 1U, 2U and 4U sizes in fixed and sliding.

The HD (High Density) panel is available in 1U, 2U and 4U sizes, and supports high density applications in data centers and buildings.

The UD (Ultra Density) panel is designed for even higher density applications and is available in 2U and 4U sizes.



EPX-1U-MOD-ENC



EPX-2U-MOD-ENC



EPX-4U-MOD-ENC



HD-1U



HD-2U



HD-4U



HD-2U-SP



UD-2U



UD-4U

G2 Family

The G2 family of panels and modules is a versatile solution that is available in configurations for any application. No matter what polarity, fiber count or performance needed; the G2 family has a solution. Our G2 family modules fit into any EPX, HD or UD panels offering density up to 144f per RU Simplex LC or 48f per RU MPO adding flexibility to any configuration.

The following high-level overview provides details of the EPX, HD and UD panels and associated modules and components.

G2 PANELS				
Series	Density	Concept	Material ID	Description
EPX - Express Compact & Flexible	96 LC/RU 32 MPO/RU	1 U Sliding Panel	760249998	EPX-1U-MOD-ENC
		1 U Fixed Panel	760251042	EPX-1U-MOD-ENC-FX
		2 U Sliding Panel	760251044	EPX-2U-MOD-ENC
		2 U Fixed Panel	760251046	EPX-2U-MOD-ENC-FX
		4 U Sliding Panel	760251048	EPX-4U-MOD-ENC
		4 U Fixed Panel	760251050	EPX-4U-MOD-ENC-FX
		Open Fixed Panel	760251098	EPX-1U-MOD-OPEN-FX
HD - High Density Premium Features	96 LC/RU 32 MPO/RU	Standard Fixed	760210732	HD-1U-FX
			760210740	HD-2U-FX
			760210757	HD-4U-FX
		Standard Sliding	760209940	HD-1U
			760209957	HD-2U
			760209965	HD-4U
		Standard w/Splicing	760231506	HD-1U-SP
			760231514	HD-2U-SP
			760231522	HD-4U-SP
UD - Ultra Density Premium Features	144 LC/RU 48 MPO/RU	Premium Sliding	760227306	UD-2U
			760227314	UD-4U

Fiber solutions



360DPis-24LC-LS

G2 Adapter Packs

G2 ADAPTER PACKS				
	12 Fiber		24 Fiber	
	Material ID	Description	Material ID	Description
LC Multimode (OM3-OM4)	760230938	360DPis-12LC-LS	760216754	360DPis-24LC-LS
LC Multimode (OM5)	760236043	360DPis-12LC-WB	760236041	360DPis-24LC-WB
LC Singlemode	760230946	360DPis-12LC-SM	760216762	360DPis-24LC-SM
LC Singlemode APC	760230961	360DPis-12LCA-SM	760216770	360DPis-24LCA-SM
SC Multimode (OM3-OM4)	760134551	360DP-12SC-LS	X	X
SC Singlemode	760135087	360DP-12SC-SM	X	X
SC Singlemode APC	760135095	360DP-12SCA-SM	X	X



360DP-2MPO



360DP-4MPO

G2 MPO ADAPTER PACKS METHOD B			
	Material ID	Description	
2 MPO	760107490	360DP-2MPO	
4 MPO	760107508	360DP-4MPO	
6 MPO	760107516	360DP-6MPO	
8 MPO	760107524	360DP-8MPO	



360DP-6MPO-A



360DP-8MPO-A

G2 MPO ADAPTER PACKS METHOD A			
	Material ID	Description	
2 MPO	760243438	360DP-2MPO-A	
4 MPO	760243439	360DP-4MPO-A	
6 MPO	760242723	360DP-6MPO-A	
8 MPO	760242724	360DP-8MPO-A	



G2-SP-12LCX-PT

G2 Splice Cassettes

SPLICE CASSETTES WITH PIGTAILS		
Multimode		
Material ID	Product Number	Description
760244927	G2-SP-24LCX-PT	Splicing cassette, 24LC, OM4, pigtail
760244928	G2-SP-24LCX-RPT	Splicing cassette, 24LC, OM4, ribbon pigtail
760245398	G2-SP-24LCV-PT	Splicing cassette, 24LC, OM5, pigtail
760245399	G2-SP-12LCX-PT	Splicing cassette, 12LC, OM4, pigtail
760245400	G2-SP-12LCX-RPT	Splicing cassette, 12LC, OM4, ribbon pigtail
760245403	G2-SP-12LCV-PT	Splicing cassette, 12LC, OM5, pigtail
Singlemode		
760244929	G2-SP-24LCG-PT	Splicing cassette, 24LC, singlemode, pigtail
760244930	G2-SP-24LCG-RPT	Splicing cassette, 24LC, singlemode, ribbon pigtail
760245401	G2-SP-12LCG-PT	Splicing cassette, 12LC, singlemode, pigtail
760245402	G2-SP-12LCG-RPT	Splicing cassette, 12LC, singlemode, ribbon pigtail

SMOUV splice protectors are included with all splice cassettes



G2-SP-12LC

SPLICE CASSETTES WITHOUT PIGTAILS		
Material ID	Product Number	Description
760245494	G2-SP-24LC	Splicing cassette, 24LC, no pigtail
760245495	G2-SP-12LC	Splicing cassette, 12LC, no pigtail
760245496	G2-SP-12SC	Splicing cassette, 12SC, no pigtail
760245497	G2-SP-0000	Splicing cassette, no adapter, no pigtail

SMOUV splice protectors are included with all splice cassettes

Fiber solutions



DM12-24LC-WB-ULL

G2 Modules

G2 ULL modules support higher speeds over longer distances allowing you to meet the loss budgets of today's ultra low-loss links and can be used for the CommScope Application Assurance Guarantee. G2 ULL modules are factory tested to .35 dB IL multimode and 0.60 dB singlemode.

G2 MODULES - ULTRA LOW LOSS SOLUTIONS METHOD B ENHANCED								
	MPO 8 - 24 Fiber		MPO 12 - 12 Fiber		MPO 12 - 24 Fiber		MPO 24 - 24 Fiber	
	Material ID	Description	Material ID	Description	Material ID	Description	Material ID	Description
LC Multimode (OM3-OM4)	760236108	DM08-24LC-LS-ULL	760238838	DM12-12LC-LS-ULL	760236110	DM12-24LC-LS-ULL	760236112	DM24-24LC-LS-ULL
LC Multimode (OM5)	760236109	DM08-24LC-WB-ULL	760238839	DM12-12LC-WB-ULL	760236111	DM12-24LC-WB-ULL	760236113	DM24-24LC-WB-ULL
LC Singlemode UPC	760238082	DM08-24LC-SM-ULL	760238837	DM12-12LC-SM-ULL	760238083	DM12-24LC-SM-ULL	X	X



360DMis-12LC-LS



360DMis-12LC-SM



360DMis-12LCA-SM



360DMis-24LC-LS

G2 MODULES - LOW LOSS SOLUTIONS METHOD B				
	MPO12 - 12 Fiber		MPO12 - 24 Fiber	
	Material ID	Description	Material ID	Description
LC Multimode (OM3-OM4)	760224071	360DMis-12LC-LS	760206532	360DMis-24LC-LS
LC Multimode (OM5)	760224113	360DMis-12LC-LS-WB	760217950	360DMis-24LC-WB
LC Singlemode UPC	760224089	360DMis-12LC-SM	760206540	360DMis-24LC-SM
LC Singlemode APC	760224238	360DMis-12LCA-SM	760206565	360DMis-24LCA-SM
SC Multimode (OM3-OM4)	760109967	360DM-12SC-LS	X	X
SC Singlemode UPC	760109975	360DM-12SC-SM	X	X
SC Singlemode APC	760109991	360DM-12SCA-SM	X	X



DM12-24LC-LS-A

G2 MODULES-MPOOptimate SOLUTIONS METHOD A								
	MPO12 - 12 Fiber - Straight		MPO 12 - 12 Fiber - Pair Flipped		MPO 12 - 24 Fiber - Straight		MPO 12 - 24 Fiber - Pair Flipped	
	Material ID	Description	Material ID	Description	Material ID	Description	Material ID	Description
LC Multimode (OM3-OM4)	760242493	DM12-12LC-LS-A	760242494	DM12-12LC-LS-AF	760242495	DM12-24LC-LS-A	760242496	DM12-24LC-LS-AF
LC Singlemode (OS2)	760242498	DM12-12LC-SM-A	760242499	DM12-12LC-SM-AF	760242500	DM12-24LC-SM-A	760242501	DM12-24LC-SM-AF

G2 MODULES-MPOOptimate SOLUTIONS METHOD A				
	MPO 24 - 24 Fiber - Straight		MPO 24 - 24 Fiber - Pair Flipped	
	Material ID	Description	Material ID	Description
LC Multimode (OM3-OM4)	760242497	DM24-24LC-LS-A	760242502	DM24-24LC-LS-AF

Fiber solutions

G2 Conversion Modules



CM12-2x3-LS-ULL

G2 conversion modules are available in low-loss, 0.50 dB MM/1.34 dB SM IL and ultra low-loss 0.40 dB MM/0.70 dB SM IL performance.

G2 CONVERSION MODULES- ULTRA LOW LOSS METHOD B ENHANCED		
	Ultra Low Loss Method B Enhanced	
	Material ID	Description
MPO12 (2) / MPO8 (3)	760237217	CM12-2x3-LS-ULL
MPO12 (4) / MPO8 (6)	760237220	CM12-4x6-LS-ULL
MPO12 (2) / MPO8 (3) Singlemode	760237216	CM12-2x3-SM-ULL
MPO12 (4) / MPO8 (6) Singlemode	760237219	CM12-4x6-SM-ULL
MPO12 (2) / MPO8 (3) OM5	760237218	CM12-2x3-WB-ULL
MPO12 (4) / MPO8 (6) OM5	760237221	CM12-4x6-WB-ULL



360CM12-2x3-LS

G2 CONVERSION MODULES - LOW LOSS METHOD B		
	Low Loss Method B	
	Material ID	Description
MPO12 (2) / MPO8 (3)	760200345	360CM12-2x3-LS
MPO12 (4) / MPO8 (6)	760200352	360CM12-4x6-LS
MPO12 (2) / MPO8 (3) Singlemode	760220400	360CM12-2x3-TS
MPO12 (4) / MPO8 (6) Singlemode	760220418	360CM12-4x6-TS
MPO12 (2) / MPO8 (3) OM5	X	X
MPO12 (4) / MPO8 (6) OM5	X	X



CM12-2x3-LS-A

G2 CONVERSION MODULES - MPOptimate SOLUTIONS METHOD A		
	MPO12 - 12 Fiber	
	Material ID	Description
MPO12 (2) / MPO8 (3) Straight	760245325	CM12-2X3-LS-A
MPO12 (2) / MPO8 (3) Pair Flipped	760245326	CM12-2X3-LS-AF
MPO24 (1) / MPO8 (3) Straight	760245327	CM24-1X3-LS-A
MPO24 (2) / MPO8 (6) Straight	760245328	CM24-2x6-LS-A

Fiber solutions



WB2-EMT-BK-4P-MOD

G2 Wall Boxes and G2 Accessories

Wall Mount Building Enclosures provide fiber distribution management when space is at a premium. The WB2-MOD's are compatible with all G2 modules and adapter packs.

G2 WALLBOXES			
Density	Material ID	Description	
24 LC	760248900	WB2-EMT-BK-1P-MOD	
48 LC	760248901	WB2-EMT-BK-2P-MOD	
96 LC	760248902	WB2-EMT-BK-4P-MOD	
192 LC	760248903	WB2-EMT-BK-8P-MOD	



AGL-SPLICE-48



360 LP-STACK-SPT



AGL-1U-TROUGH

G2 ACCESSORIES		
Material ID	Product Number	Description
AGILE Panel Accessories		
760241378	AGL-SPLICE-48	AGILE Splice Tray Kit
760193938	AGL-1U-TROUGH	AGILE panel 1U Jumper Management Trough
Panel Accessories		
760039867	RS-2AF-16SF	RoloSplice Kit with 2 fusion splice trays for 1U and 2U rack mount, 2 and 4 port wall mount
760031856	RS-4AF-16SF	RoloSplice Kit with 4 fusion splice trays for 1U and 2U rack mount, 2 and 4 port wall mount
760031054	SW-6AF-16SF	Fusion Splice Wallet Kit with 6 splice trays for 4U rack mount and 8 port wall mount.
760148502	360-LP-STACK-SPT	Fusion Splice Tray Kit, stackable, large format for 1U and 2U rack mount
Miscellaneous		
760207944	HD-1U-REAR-EXT	1U Rear cable extension
760239082	SD-HD-UD-UDS2U-DOOR-LOCK-KT	Door lock kit for SD, HD, UD and UDS2U panels, including one (1) lock and one (1) key
760209619	CABLE-MOUNT-KIT-12	Cable attachment molding x 12
760058677	RMB-6-1/2	InstaPATCH Plus attachment bracket, rack mounted, six 1/2" fittings
760058685	RMB-6-3/8	InstaPATCH Plus attachment bracket, rack mounted, six 3/8" fittings
760109462	360G2-MOD-BLANK-4PK	Mod Panel Blank Adapter Pack, 4 Panels
760039875	G2-SRF	Small Diameter Cable Entrance Kit
760039883	G2-23BRKT	Mounting Bracket
760185595	KIT, FIBER DRUM	Fiber Drum Kit (2 per kit)

Fiber solutions

EHD Fiber Solutions

EHD fiber solutions are designed for today's more crowded and demanding environments. Available in 1U, 2U or 4U configurations, they support 72 duplex LC ports or 72 MPO ports per RU. EHD modules, adapter packs and cassettes are 24 fiber solutions.



EHD-1U



EHD-2U



EHD-4U

EHD Panels			
Density	Material ID	Description	
144 LC	EHD-1U	EHD-1U	
288 LC	EHD-2U	EHD-2U	
576 LC	EHD-4U	EHD-4U	



EHD-DP-12LC-WB

EHD LC Adapter packs			
24 Fiber			
	Material ID	Description	
LC Multimode (OM3-OM4)	760238903	EHD-DP-12LC-LS	
LC Multimode (OM5)	760238902	EHD-DP-12LC-WB	
LC Singlemode UPC	760238904	EHD-DP-12LC-SM	



EHD-DP-12MPO-ALL-A

EHD MPO Adapter Packs		
	Material ID	Description
MPO 12 Method B	760235622	EHD-DP-12MPO-ALL-B
MPO 12 Method A	760235621	EHD-DP-12MPO-ALL-A

Fiber solutions

EHD Fiber Solutions



EHD08-DM-24LC-LS-B-ULL



EHD08-DM-24LC-WB-B-ULL

EHD ULL modules support higher speeds over longer distances allowing you to meet the loss budgets of today's ultra low-loss links and can be used for the CommScope Application Assurance Guarantee. EHD ULL modules are factory tested to 0.35 dB IL multimode and 0.60 dB singlemode.

EHD LC-MPO Modules - 24 Fiber						
	MPO 8 Method B Enhanced		MPO 12 Method B Enhanced		MPO 24 Method B Enhanced	
	Material ID	Description	Material ID	Description	Material ID	Description
LC Multimode (OM3-OM4)	760237958	EHD08-DM-24LC-LS-B-ULL	760237993	EHD12-DM-24LC-LS-B-ULL	760237999	EHD24-DM-24LC-LS-B-ULL
LC Multimode (OM5)	760237959	EHD08-DM-24LC-WB-B-ULL	760237994	EHD12-DM-24LC-WB-B-ULL	760238000	EHD24-DM-24LC-WB-B-ULL
LC Singlemode UPC	760237957	EHD08-DM-24LC-SM-B-ULL	760237992	EHD12-DM-24LC-SM-B-ULL	X	X
LC Singlemode APC	X	X	760239368	EHD12-DM-24LA-SM-B-LL	X	X



EHD-SP-24LC-LS-AS-ULL



EHD-SP-24LC-SM-AS-ULL

The EHD solution uses modular splice cassettes for integrated splicing and patching applications.

EHD Splice Cassettes - 24 Fiber - Method A				
	Stranded		Ribbon	
	Material ID	Description	Material ID	Description
LC Multimode (OM3-OM4)	760238935	EHD-SP-24LC-LS-B-ULL	760238931	EHD-SP-24LC-LSR-B-ULL
LC Singlemode	760238936	EHD-SP-24LC-SM-B-ULL	760238932	EHD-SP-24LC-SMR-B-ULL
	760238938	EHD-SP-24LA-SM-B	760238934	EHD-SP-24LA-SMR-B

EHD Splice Cassettes - 24 Fiber - Method B				
	Stranded		Ribbon	
	Material ID	Description	Material ID	Description
LC Multimode (OM3-OM4)	760237943	EHD-SP-24LC-LS-AS-ULL	760237941	EHD-SP-24LC-LSR-AS-ULL
LC Singlemode	760237944	EHD-SP-24LC-SM-AS-ULL	760237942	EHD-SP-24LC-SMR-AS-ULL

Fiber solutions

CHD Fiber Solutions

CHD fiber solutions have the same densities as EHD, supporting 72 duplex LC ports or 72 MPO ports per RU. CHD offers more flexibility with 12 fiber modules, adapter packs and cassettes.



CHD-1U



CHD-2U



CHD-4U

CHD Panels		
Density	Material ID	Description
144 LC	CHD-1U	CHD-1U
288 LC	CHD-2U	CHD-2U
576 LC	CHD-4U	CHD-4U

CHD LC ADAPTER PACKS		
12Fiber		
	Material ID	Description
LC Multimode OM4	760245730	CHD-DP-12LC-LS
LC Multimode OM5	760245729	CHD-DP-12LC-WB
LC Singlemode UPC	760243203	CHD-DP-12LC-SM

CHD MPO Adapter Packs		
	Material ID	Description
MPO 4 Method B	760243200	CHD-DP-4MPO-ALL-B
MPO 6 Method B	760243198	CHD-DP-6MPO-ALL-B
MPO 4 Method A	760243199	CHD-DP-4MPO-ALL-A
MPO 6 Method A	760243197	CHD-DP-6MPO-ALL-A

CHD ULL modules support higher speeds over longer distances allowing you to meet the loss budgets of today's ultra low-loss links and can be used for the CommScope Application Assurance Guarantee. CHD ULL modules are factory tested to 0.35 dB IL multimode and 0.60 dB singlemode.

CHD LC-MPO Modules - 12 Fiber		
MPO 12 Method B Enhanced		
	Material ID	Description
LC Multimode (OM3-OM4)	760245723	CHD12-DM-12LC-LS-B-ULL
LC Multimode (OM5)	760245728	CHD12-DM-12LC-WB-B-ULL
LC Singlemode UPC	760245724	CHD12-DM-12LC-SM-B-ULL

Fiber solutions

CHD Fiber Solutions



CHD-SP-12LC-SMR-B-ULL

CHD Splice Cassettes - 12 Fiber				
	Stranded		Ribbon	
	Material ID	Description	Material ID	Description
LC Multimode (OM3-OM4)	760244973	CHD-SP-12LC-LS-B-ULL	760245733	CHD-SP-12LC-LSR-B-ULL
LC Singlemode UPC	760244824	CHD-SP-12LC-SM-B-ULL	760244826	CHD-SP-12LC-SMR-B-ULL
LC Singlemode APC	760245736	CHD-SP-12LA-SM-AS-LL	760245737	CHD-SP-12LA-SMR-AS-LL
Field Term Cassette - No Fiber	760244827	CHD-FT-00-LC-00	N/A	N/A



EHD-CMB



EHD-CMB-GAB



BK-FP-SML



BK-FP-LRG

EHD and CHD Accessories		
Material ID	Product Number	Description
EHD-CMB	EHD-CMB	EHD and CHD external cable management cabinet mounting bracket
EHD-CMB-GAB	EHD-CMB-GAB	EHD and CHD external cable management cabinet mounting bracket for trunk gland adapters
760238380	BK-FP-SML	Ribbon splice cassette blocking kit for EHD-1U, EHD-2U and CHD-1U
760238381	BK-FP-LRG	Ribbon splice cassette blocking kit for EHD-4U
760245038	CHD-BK-2U	Ribbon splice cassette blocking kit for CHD-2U and CHD-4U (x2 needed for 4U)

Fiber solutions

Specialty Solutions



The pre-stubbed EHD panel has LC connectors at the panel and stub on the far end. It allows customers to meet demands for increasing bandwidth and more connections in a timely, cost-effective manner while reducing optical loss. Installers simply reel out cable from the stub end and splice to large fiber count Outside Plant or Backbone cables.

EHD Pre-Terminated Panels

Density	Concept	Material ID	Description
144 LC	Premium Sliding	HCC0-1ADDL0AxxxM	1RU Pre-stubbed Patch Panel with LC Adapter and 144f I/O, Riser/LSZH cable, right cable entry, singlemode
144 LC	Premium Sliding	HCD0-1ADDL0AxxxM	1RU Pre-stubbed Patch Panel with LC Adapter and 144f I/O, Riser/LSZH cable, left cable entry, singlemode
288 LC	Premium Sliding	HCC0-2BDDL0AxxxM	2RU Pre-stubbed Patch Panel with LC Adapter and 288f I/O, Riser/LSZH cable, right cable entry, singlemode
288 LC	Premium Sliding	HCD0-2BDDL0AxxxM	2RU Pre-stubbed Patch Panel with LC Adapter and 288f I/O, Riser/LSZH cable, left cable entry, singlemode

xxx - Denotes cable length in meters (lengths from 25m, and in 25m increments thereafter to 400m)
Other configurations are available. Contact your CommScope representative for more details.

The ultra-density splice family of splicing panels features a modular, ultra-dense design that scales effortlessly while holding maintenance costs and space requirements to a minimum. Perfect for areas like meeting rooms and interconnects.



UDS-2U-BK-LA-A

UDS -Ultra Density Splicing

Low Loss			Ultra Low Loss		
Density	Material ID	Description	Density	Material ID	Description
288 LC APC Method A	760239066	UDS-2U-BK-LA-A	288 LC UPC Method A	760239074	UDS-2U-BK-LC-A-ULL
288 LC APC Method B Enhanced	760239068	UDS-2U-BK-LA-B	288 LC UPC Method B Enhanced	760239076	UDS-2U-BK-LC-B-ULL
864 LC APC Method A	760239070	UDS-6U-BK-LA-A	864 LC UPC Method A	760239078	UDS-6U-BK-LC-A-ULL
864 LC APC Method B Enhanced	760239072	UDS-6U-BK-LA-B	864 LC UPC Method B Enhanced	760239080	UDS-6U-BK-LC-B-ULL

Fiber solutions



Material ID	Description	Length
LC - LC Duplex Singlemode		
FFWLCLC42-JXM001	JUMPER,LSZH,TS,1.6MM,DPLX,LC/LC,YL,MT001	1 m
FFWLCLC42-JXM002	JUMPER,LSZH,TS,1.6MM,DPLX,LC/LC,YL,MT002	2 m
FFWLCLC42-JXM003	JUMPER,LSZH,TS,1.6MM,DPLX,LC/LC,YL,MT003	3 m
FFWLCLC42-JXM005	JUMPER,LSZH,TS,1.6MM,DPLX,LC/LC,YL,MT005	5 m
FFWLCLC42-JXM010	JUMPER,LSZH,TS,1.6MM,DPLX,LC/LC,YL,MT010	10 m
SC - SC Duplex Singlemode		
FFWSCSC42-JXM001	JUMPER,LSZH,TS,1.6MM,DPLX,SC/SC,YL,MT001	1 m
FFWSCSC42-JXM002	JUMPER,LSZH,TS,1.6MM,DPLX,SC/SC,YL,MT002	2 m
FFWSCSC42-JXM003	JUMPER,LSZH,TS,1.6MM,DPLX,SC/SC,YL,MT003	3 m
FFWSCSC42-JXM005	JUMPER,LSZH,TS,1.6MM,DPLX,SC/SC,YL,MT005	5 m
FFWSCSC42-JXM010	JUMPER,LSZH,TS,1.6MM,DPLX,SC/SC,YL,MT010	10 m
LC - SC Duplex Singlemode		
FFWLCSC42-JXM001	JUMPER,LSZH,TS,1.6MM,DPLX,LC/SC,YL,MT001	1 m
FFWLCSC42-JXM002	JUMPER,LSZH,TS,1.6MM,DPLX,LC/SC,YL,MT002	2 m
FFWLCSC42-JXM003	JUMPER,LSZH,TS,1.6MM,DPLX,LC/SC,YL,MT003	3 m
FFWLCSC42-JXM005	JUMPER,LSZH,TS,1.6MM,DPLX,LC/SC,YL,MT005	5 m
FFWLCSC42-JXM010	JUMPER,LSZH,TS,1.6MM,DPLX,LC/SC,YL,MT010	10 m
LC - LC Duplex - OM4		
FFXLCLC42-MXM001	JUMPER,LSZH,LS,1.6MM,DPLX,LC/LC,AQ,MT001	1 m
FFXLCLC42-MXM002	JUMPER,LSZH,LS,1.6MM,DPLX,LC/LC,AQ,MT002	2 m
FFXLCLC42-MXM003	JUMPER,LSZH,LS,1.6MM,DPLX,LC/LC,AQ,MT003	3 m
FFXLCLC42-MXM005	JUMPER,LSZH,LS,1.6MM,DPLX,LC/LC,AQ,MT005	5 m
FFXLCLC42-MXM010	JUMPER,LSZH,LS,1.6MM,DPLX,LC/LC,AQ,MT010	10 m
SC - SC Duplex - OM4		
FFXSCSC42-MXM001	JUMPER,LSZH,LS,1.6MM,DPLX,SC/SC,AQ,MT001	1 m
FFXSCSC42-MXM002	JUMPER,LSZH,LS,1.6MM,DPLX,SC/SC,AQ,MT002	2 m
FFXSCSC42-MXM003	JUMPER,LSZH,LS,1.6MM,DPLX,SC/SC,AQ,MT003	3 m
FFXSCSC42-MXM005	JUMPER,LSZH,LS,1.6MM,DPLX,SC/SC,AQ,MT005	5 m
FFXSCSC42-MXM010	JUMPER,LSZH,LS,1.6MM,DPLX,SC/SC,AQ,MT010	10 m
LC - SC Duplex - OM4		
FFXLCSC42-MXM001	JUMPER,LSZH,LS,1.6MM,DPLX,LC/SC,AQ,MT001	1 m
FFXLCSC42-MXM002	JUMPER,LSZH,LS,1.6MM,DPLX,LC/SC,AQ,MT002	2 m
FFXLCSC42-MXM003	JUMPER,LSZH,LS,1.6MM,DPLX,LC/SC,AQ,MT003	3 m
FFXLCSC42-MXM005	JUMPER,LSZH,LS,1.6MM,DPLX,LC/SC,AQ,MT005	5 m
FFXLCSC42-MXM010	JUMPER,LSZH,LS,1.6MM,DPLX,LC/SC,AQ,MT010	10 m
LC - LC Duplex - OM5		
FFVLCLC42-NXM001	JUMPER,LSZH,WB,1.6MM,DPLX,LC/LC,LG,MT001	1 m
FFVLCLC42-NXM002	JUMPER,LSZH,WB,1.6MM,DPLX,LC/LC,LG,MT002	2 m
FFVLCLC42-NXM003	JUMPER,LSZH,WB,1.6MM,DPLX,LC/LC,LG,MT003	3 m
FFVLCLC42-NXM005	JUMPER,LSZH,WB,1.6MM,DPLX,LC/LC,LG,MT005	5 m
FFVLCLC42-NXM010	JUMPER,LSZH,WB,1.6MM,DPLX,LC/LC,LG,MT010	10 m

Fiber solutions

Fiber Patch Cord Configurator



Prefix

1	FE	Jumper - riser
2	FF	Jumper - Dual rated LSZH/Riser

Fiber type

3	X	Multimode (OM4)
	W	Singlemode
	V	Multimode (OM5)

Connector 1

4	LC	LC standard
	LA	LC angled
5	SC	SC standard
	SA	SC angled

Connector 2

6	LC	LC standard
7	LA	LC angled
	SC	SC standard
	SA	SC angled

Cordage size

8	2	1.6 mm simplex
	4	1.6 mm zipcord

Fiber count

9	1	1 fiber
	2	2 fiber

Jacket color

11	J	Yellow
	M	Aqua
	N	Lime Green

Breakout length

12	X	No breakout
----	---	-------------

Unit of measurement

13	F	Feet
	M	Meter

Length

14	2-999	Feet
-	1-999	Meters
16		

LC keyed fiber patchcords are also available as part of CommScope secure fiber solutions.

More information is available [here](#).

Note: OM5 jumpers are only available in LC to LC.

ULL fiber-optic LC patch cords

1	2	3	4	5	6	7	8	9	10	11	12	13	14-16
U	D	X	L	C	L	C	4	2	-	M	X	F	010
Construction type U Ultra-low loss	Cable family D Plenum F LSZH/Riser	Fiber type G Singlemode (A2) X OM4 multimode V OM5 WB multimode	Connector 1 LC LC Standard	Connector 2 LC LC Standard UC Unconnectorized	Cordage size 2 1.6mm simplex 4 1.6mm zipcord	Fiber count 1 1-fiber 2 2-fiber	Color M Aqua N Lime green J Yellow	Breakout length X No Breakout	UOM F Feet M Meter	Length 2-200 feet 1-061 meters			

- OM4 standard is aqua
- OM5 standard is lime green
- Singlemode standard is yellow

Fiber solutions

Uniboot patch cord configurator

- 1.5mm on 2.0mm fiber patch cords
- Industry density polarity changeable by color and design
- Available in dual rated Riser/LSZH and plenum jacket

1 U	2 D	3 X	4 L	5 U	6 L	7 U	8 6	9 2	10 -	11 M	12 X	13 F	14-16 010
Construction type U Ultra-low loss	Cable family D Plenum F LSZH/Riser	Fiber type G Singlemode (A2) X OM4 multimode V OM5 WB multimode	Connector 1 LU LC Uniboot		Connector 2 LU LC Uniboot		Cordage size K 1.5mm 6 2.0mm	Fiber count 2 2-fiber	Color M Aqua N Lime green J Yellow		Breakout length X No Breakout	UOM F Feet M Meter	Length 2-200 feet 1-061 meters

· OM4 standard is aqua
· OM5 standard is lime green
· Singlemode standard is yellow

· Other lengths available
Please contact CommScope

Pigtails for Adapter Packs



1	2	3	4	5	6	7	8	9	-	11	12	13	14	-	16
F	A	X	L	C	U	C	O	I	-	M	X	F	O	O	2

Prefix

1	FA	Pigtail tight buffer
2	FB	Pigtail - Riser SBJ

Fiber type

3	X	550 OM4 multimode
	W	Singlemode
	V	WB OM5

Connector 1

4	LC	LC standard
	LA	LC angled
5	SC	SC standard
	SA	SC angled

Connector 2

6	UC	Unconnectorized
7		

Cordage size

8	0	0.9 mm (Tight buffered fiber)
	1	0.9 mm (Reinforced Buffered Fiber)

Fiber count

9	1	1 fiber
	A	6 fiber pigtail kit BL-WH (1-6)
	B	6 fiber pigtail kit RD-AQ (7-12)
	C	12 fiber pigtail kit BL-AQ (1-12)

Jacket color

11	A	Blue
	B	Orange
	C	Green
	D	Brown
	E	Slate
	G	Red
	H	Black
	J	Yellow
	K	Violet
	L	Rose
	M	Aqua
	N	Lime Green
	X	KIT pigtail

Breakout length

12	X	No breakout
----	---	-------------

Unit of measurement

13	F	Feet
	M	Meter

Length

14	1-23	Feet
16	1-7	Meters

LC keyed fiber pigtails are also available as part of CommScope secure fiber solutions.

Fiber solutions

MPO trunk cables

- Factory terminated and tested trunk cables for instant field connections and guaranteed quality and performance
- Designed for administrative convenience—guaranteed transmit-to-receive connectivity
- Supports easy reconfiguration for moves, adds and changes
- Easy upgrade path to parallel transmission and associated applications, while preserving the initial investment



Method A

- Available in OM4 or SM A2
- 12-fiber MPO connector-based modular design enables simple connections
- CPR rate B2ca available

1 A	2 J	3 X	4 M	5 P	6 M	7 P	8 A	9 D	10 -	11 M	12 B	13 F	14 - 16 010
Prefix	Fiber Type	Connector 1	Connector 2	Cordage Size	Fiber Count	Jacket Color	Breakout Length	UOM	Length				
G Trunk - Plenum J Trunk - Dual Rated (LSZH / Riser) 3 Trunk-LSZH Class B2ca	G SM, G.657.A2 (8G Fiber) X Multimode (OM4)	MP MPO (Female No Pins) MX MPO (Male Pins)	MP MPO (Female No Pins) MX MPO (Male Pins)	A 12 Fiber PmP, Trunk Cable	D 12 Fiber F 24 Fiber G 36 Fiber H 48 Fiber K 72 Fiber L 96 Fiber M 144 Fiber	J Yellow M Aqua • Singlemode standard is Yellow • OM4 standard is Aqua	A 33" Both No Gland No Pulling Grip B 33" Both Both Gland No Pulling Grip C 33" Both Both Gland Pulling Grip End A	F Feet M Meter	10-999 Feet 3-305 Meter				

A Used with UCP/FPX or other Panels
 B Used with SD/HD/UD/EHD Panels
 C Used with SD/HD/UD/EHD Panels

Fiber solutions

MPO trunk cables

Method B

- Available in OM4 or SM A1
- 12-fiber MPO connector-based modular design enables simple connections



1	2	3	4	5	6	7	8	9	10	11	12	13	14 - 16
F	G	X	M	P	M	P	A	D	-	M	B	F	010
Prefix FG Trunk - Plenum FH Trunk - Plenum Armored FJ Trunk-LSZH/Riser FK Trunk-LSZH/Riser-Armored F3 Trunk-LSZH/Riser (CPR B2CA Europe Only)	Fiber Type X OM4 Multimode Z OM3 Multimode V OM5 WB Multimode	Connector 1 MP MPO (Female No Pins)	Connector 2 MP MPO (Female No Pins) MX MPO (Male Pins)	Cordage Size A 12 Fiber PmP, Cable	Fiber Count D 12 Fiber F 24 Fiber G 36 Fiber H 48 Fiber K 72 Fiber L 96 Fiber M 144 Fiber	Jacket Color J Yellow M Aqua N Lime	Breakout Length A No Gland B With Gland C Pulling Grip	UOM F Feet M Meter	Length 10-999 Feet 3-305 Meter				

- Singlemode standard is Yellow
- OM4 standard is Aqua
- OM5 standard is Lime Green

Method B-Enhanced

- Available in OM4, OM5 or SM A2
- 8, 12 and 24-fiber MPO connector-based modular design enables simple connections
- CPR rate B2ca available

ULL MPO-8 trunk cables

1	2	3	4	5	6	7	8	9	10	11	12	13	14-16
U	G	V	Q	X	Q	X	Q	H	-	N	A	M	010
Construction type U Ultra-low loss	Family G Trunk, Plenum J Trunk, LSZH/Riser (CPR D2CA) 3 Trunk, LSZH/Riser (CPR B2CA Europe Only)	Fiber type G Singlemode (A2) X OM4 multimode V OM5 WB multimode	Connector 1 QP MPO (female) QX MPO (male)	Connector 2 QX MPO (male)	Construction Q 8 Fiber PmP	Fiber count 8 8-fiber R 16-fiber F 24-fiber H 48-fiber U 64-fiber K 72-fiber L 96-fiber M 144-fiber	Color M Aqua N Lime green J Yellow	Options A No gland B With gland C With pulling eye	Unit of measure F Feet M Meter	Length 010-999 Feet 003-999 Meter			

- No female to female configurations.
- OM4 standard is aqua
- OM5 standard is lime green
- Singlemode standard is yellow

ULL MPO-12 trunk cables

1	2	3	4	5	6	7	8	9	10	11	12	13	14-16
U	J	X	M	X	M	X	A	K	-	M	A	F	010
Construction type U Ultra-Low Loss	Family G Trunk, Plenum J Trunk, LSZH/Riser (CPR D2CA) 3 Trunk, LSZH/Riser (CPR B2CA Europe Only)	Fiber type G Singlemode (A2) X OM4 multimode V OM5 WB multimode	Connector 1 MP MPO (female) MX MPO (male)	Connector 2 MX MPO (male)	Construction A 12 Fiber PmP	Fiber count D 12-fiber F 24-fiber H 48-fiber K 72-fiber L 96-fiber M 144-fiber	Color M Aqua N Lime green J Yellow	Options A No gland B With gland C With pulling eye	Unit of measure F Feet M Meter	Length 010-999 Feet 003-999 Meter			

- No female to female configurations.
- OM4 standard is aqua
- OM5 standard is lime green
- Singlemode standard is yellow

ULL MPO-24 trunk cable configurator

1	2	3	4	5	6	7	8	9	10	11	12	13	14-16
U	G	V	2	X	2	X	B	M	-	N	C	F	010
Construction type U Ultra-Low Loss	Family G Trunk, Plenum J Trunk, LSZH/Riser (CPR D2CA) 3 Trunk, LSZH/Riser (CPR B2CA Europe Only)	Fiber type G Singlemode (A2) X OM4 multimode V OM5 WB multimode	Connector 1 2X MPO (male)	Connector 2 2P MPO (female) 2X MPO (male) UC Unconnectorized	Construction B 24-fiber PmP	Fiber count F 24-fiber H 48-fiber K 72-fiber L 96-fiber M 144-fiber	Color M Aqua N Lime green	Options A No gland B With gland C With pulling eye	Unit of measure F Feet M Meter	Length 010-999 Feet 003-999 Meter			

- No female to female configurations
- Male to female will be configured as trunk extensions
- OM4 standard is aqua
- OM5 standard is lime green

Fiber solutions

Method B Ruggedized fanout cables

- 12-fiber MPO connector-based modular design enables simple connections
- Ruggedized fanouts are constructed with OM4 and OM5 fibers
- Factory terminated and tested for instant field connections and guaranteed quality and performance
- Designed for administrative convenience—guaranteed transmit-to-receive connectivity
- No special or non-standard polarity components



Ruggedized fanout configurator

1 F	2 L	3 X	4 M	5 P	6 L	7 C	8 A	9 D	10 -	11 M	12 E	13 F	14-16 010
Prefix FN Rugged F/O LSZH FL Rugged F/O Plenum F4 Rugged F/O -LSZH CPR Class B2ca	Fiber Type X Multimode (OM4) W Singlemode (G657A1) V Multimode OM5	Connector 1 MP MPO (Female No Pins) MX MPO (Male Pins)	Connector 2 LA LC Angled LC LC Standard SA SC Angled SC SC Standard	Cordage Size A 12 Fiber PmP Cable D 12 Fiber PmP I/O Cable	Fiber Count D 12 Fiber F 24 Fiber G 36 Fiber H 48 Fiber K 72 Fiber	Jacket Color J Yellow M Aqua N Lime	Breakout Length A No Gland E 24 in Breakout No Gland F 24 in Breakout With Gland G 24 in Breakout Pulling Grip H 48 in Breakout No Gland J 48 in Breakout With Gland K 48 in Breakout Pulling Grip L 72 in Breakout No Gland M 72 in Breakout With Gland N 72 in Breakout Pulling Grip P 96 in Breakout No Gland Q 96 in Breakout With Gland R 96 in Breakout Pulling Grip S 36 in Breakout No Gland T 36 in Breakout Pulling Grip U 36 in Breakout With Gland	UOM F Feet M Meter	Length minimal length based on breakout 24 in 7-999 ft 36 in 8-999 ft 48 in 9-999 ft 72 in 11-999 ft 36 in 8-999 ft 24 in 2-305 m 36-48 in 3-305 m 72 in 4-305 m				
<ul style="list-style-type: none"> • Singlemode standard is Yellow • OM4 standard is Aqua • OM5 standard is Lime 													<ul style="list-style-type: none"> • Total length includes the breakout

OM5 and PmP I/O cable is not available

ULL Ruggedized fanout configurator

1 U	2 L	3 X	4 M	5 P	6 L	7 C	8 A	9 D	10 -	11 M	12 E	13 F	14-16 010
Construction type U Ultra-low loss	Cable family L Rugged F/O Plenum N Rugged F/O LSZH/Riser 4 Rugged F/O LSZH/Riser CPR B2CA - Europe Only	Fiber type G Singlemode (A2) X OM4 multimode V OM5 WB multimode	Connector 1 QP 8f MPO (female) QX 8f MPO (male) MP 12f MPO (female) MX 12f MPO (male) 2P 24f MPO (female) 2X 24f MPO (male)	Connector 2 LC LC standard LU LC Uniboot	Cordage size A 12-fiber PmP cable Q 8-fiber PmP Cable B 24-fiber PmP Cable	Fiber count 8 8-fiber D 12-fiber F 24-fiber S 32-fiber G 36-fiber H 48-fiber U 64-fiber K 72-fiber L 96-fiber	Color M Aqua N Lime green J Yellow	Breakout length LC End A No gland E 24 in breakout No gland F 24 in breakout with gland G 24 in breakout pulling grip S 36 in breakout no gland T 36 in breakout pulling grip U 36 in breakout with gland H 48 in breakout no gland J 48 in breakout with gland K 48 in breakout pulling grip L 72 in breakout no gland M 72 in breakout with gland N 72 in breakout pulling grip	UOM F Feet M Meter	Length minimal length based on breakout 24 in 7-999 ft 36 in 8-999 ft 48 in 9-999 ft 72 in 11-999 ft 36 in 8-999 ft 24 in 2-305 m 36-48 in 3-305 m 72 in 4-305 m			
<ul style="list-style-type: none"> • Standard breakout length for Connector 1 is 33 in • OM4 standard is aqua • OM5 standard is lime green • Singlemode standard is yellow 													<ul style="list-style-type: none"> • Total length includes the breakout

*2P and 2X only available for multimode fiber

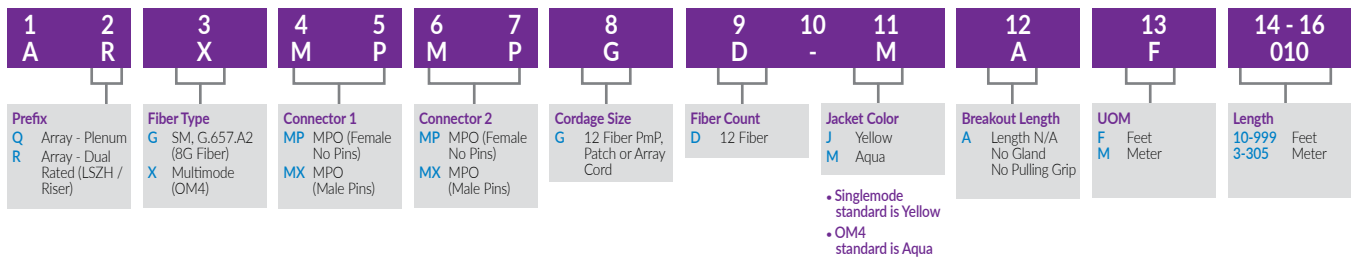
Fiber solutions

Method A MPO-12 array cables

- 12-fiber MPO connector-based modular design enables simple connections
- MPO Array cords are constructed with OM4 and SM A2 fibers
- Factory-terminated and tested for instant field connections and guaranteed quality and performance



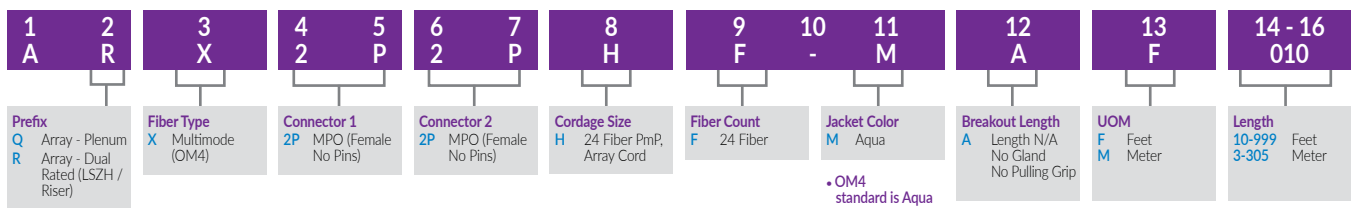
Array fanout cord configurator



Method A MPO-24 array cables

- 24-fiber MPO connector-based modular design enables simple connections
- MPO Array cords are constructed with OM4
- Factory-terminated and tested for instant field connections and guaranteed quality and performance

Array fanout cord configurator



Fiber solutions

Method B Array cords

- 12-fiber MPO connector-based modular design enables simple connections
- Array cords are constructed with OM4 and OM5 fibers
- Factory-terminated and tested for instant field connections and guaranteed quality and performance
- No special or non-standard polarity components
- MPO-LC/SC array fanouts are constructed with 1.6 mm reinforced zipcord furcation tubing for outstanding durability and dependability
- Array fanout assemblies are available in fanout length of 48" for cables over 10 feet; Cables 3-9 feet, 24 inch fanout; Cables 2 feet, 12 inch fanout



Array fanout cord configurator

1 F	2 Q	3 X	4 M	5 P	6 L	7 C	8 G	9 D	10 -	11 M	12 E	13 F	14-16 010
Prefix FR Array LSZH FQ Array Plenum	Fiber Type X Multimode (OM4) W Singlemode (G657A1) V Multimode (OM5)	Connector 1 MP MPO (Female No Pins) MX MPO (Male Pins)	Connector 2 LC LC Connector SC SC Standard	Cordage Size G 12 Fiber PmP Array Cord	Fiber Count D 12 Fiber	Jacket Color J Yellow M Aqua N Lime • Singlemode standard is Yellow • OM4 standard is Aqua • OM5 standard is Lime	Breakout Length D 12 in Breakout No Gland E 24 in Breakout No Gland H 48 in Breakout No Gland L 72 in Breakout No Gland P 96 in Breakout No Gland	UOM F Feet M Meter	Length minimal length based on breakout 24 in 7-999 ft 36 in 8-999 ft 48 in 9-999 ft 72 in 11-999 ft 36 in 8-999 ft 24 in 2-305 m 36-48 in 3-305 m 72 in 4-305 m				
													• Total length includes the breakout

ULL fiber-optic MPO-12 patch cords

1 U	2 Q	3 G	4 M	5 X	6 M	7 X	8 G	9 D	10 -	11 J	12 A	13 F	14-16 010
Construction type U Ultra-low loss	Cable family Q Plenum array R LSZH array	Fiber type G Singlemode (A2) X OM4 multimode V OM5 WB multimode	Connector 1 MP 12f MPO (female) MX 12f MPO (male)	Connector 2 MP 12f MPO (female) MX 12f MPO (male) UC Unconnected	Cordage size G 12-fiber PmP Array Cord	Fiber count D 12-fiber	Color M Aqua N Lime green J Yellow • OM4 standard is aqua • OM5 standard is lime green • Singlemode standard is yellow	Breakout length A No gland	UOM F Feet M Meter	Length 003-999 ft 001-305 m			

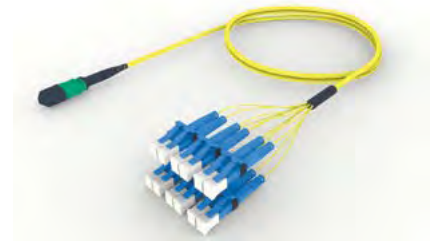
ULL fiber-optic MPO-24 patch cords

1 U	2 Q	3 V	4 2	5 X	6 2	7 X	8 H	9 F	10 -	11 N	12 A	13 F	14-16 010
Construction type U Ultra-low loss	Cable family Q Plenum array R LSZH array	Fiber type X OM4 multimode V OM5 WB multimode	Connector 1 2P 24f MPO (female) 2X 24f MPO (male)	Connector 2 2P 24f MPO (female) 2X 24f MPO (male) UC Unconnected	Cordage size H 24-fiber PmP Array Cord	Fiber count F 24-fiber	Color M Aqua N Lime green • OM4 standard is aqua • OM5 standard is lime green • Singlemode standard is yellow	Breakout length A No gland	UOM F Feet M Meter	Length 003-999 ft 001-305 m			

Fiber solutions

ULL Array Cords

- Singlemode 8- and 12-fiber or multimode 8- 12- and 24-fiber MPO connectors ensure fast and simple connections
- All 8-fiber MPO arrays have QSFP wiring
- Available in OM4 and OM5 Wideband multimode and singlemode fibers
- Factory-terminated and tested trunk cables provide superior quality and performance for field connections
- MPO-LC array fanouts are constructed with 1.6-millimeter reinforced zipcord furcation tubing for outstanding durability and dependability
- Array fanouts are available with multiple breakout lengths to simplify installation



1 U	2 Q	3 X	4 M	5 P	6 L	7 C	8 G	9 D	10 -	11 M	12 E	13 F	14-16 010
Construction type U Ultra-low loss	Cable family Q Plenum array R LSZH array	Fiber type G Singlemode (A2) X OM4 multimode V OM5 WB multimode	Connector 1 QP 8f MPO (female) QX 8f MPO (male) MP 12f MPO (female) MX 12f MPO (male) 2P 24f MPO (female) 2X 24f MPO (male)		Connector 2 LC LC connector LU LC Uniboot		Cordage size G 12-fiber PmP Array Cord J 8-fiber PmP Array Cord H 24-fiber PmP Array Cord *24-fiber PmP cable not available for singlemode	Fiber count 8 8-fiber D 12-fiber F 24-fiber		Color M Aqua N Lime green J Yellow · OM4 standard is aqua · OM5 standard is lime green · Singlemode standard is yellow	Breakout length D 12 in breakout No gland E 24 in breakout No gland H 48 in breakout No gland L 72 in breakout No gland	UOM F Feet M Meter	Length minimal length based on breakout 12 in 3-999 ft 24 in 4-999 ft 48 in 6-999 ft 72 in 8-999 ft 12 in 1-305 m 24-48 in 2-305 m 72 in 3-305 m · Other lengths available please contact CommScope
			*2P and 2X only available for multimode fiber										

Field Installable Products

CommScope's robust portfolio of field installable connectors are ideal for campus environments where exact measurements are not possible, or when there's a need for a fast repair to restore network connections. CommScope offers traditional epoxy/polish solutions, as well as solutions with a pre-polished ferrule from the factory, which eliminates the need for polishing, adhesives, and crimping in the field. Easy to use and quick to install, CommScope field installable connectors and tool kits are designed to simplify the termination process and enable you to terminate and move to your next project with minimal investment in time and cost.

- Fast to install
- No requirement for pre-engineered lengths
- Eliminates unwanted slack storage
- Consistent and reliable terminations

CommScope offers an extended line of field installable connectors and tool kits, including epoxy/polish connectors, mechanical-splice Qwik II connectors, and fusion splice-on Qwik-Fuse connectors. At CommScope, we know campus network solutions are not a one size fits all. You can trust in our products and team of experts to help add the flexibility you need to create a quality solution.



QWIK-FUSE FIELD-INSTALLABLE CONNECTORS, TOOL KITS AND ACCESSORIES

Material ID	Description	Connector	Fiber	Cable	Housing color	Package
760242874	MFC-LCF-09-5Y-12-PACK	LC	OM3/4/5	0.25/0.9 mm	Aqua	12/pack
760243371	MFC-LCF-20-5Y-12-PACK	LC	OM3/4/5	1.6/2.0 mm	Aqua	12/pack
760243372	SFC-LCF-09-8Y-12-PACK	LC-UPC	OS2	0.25/0.9 mm	Blue	12/pack
760243388	SFC-LCF-20-8Y-12-PACK	LC-UPC	OS2	1.6/2.0 mm	Blue	12/pack
760243389	SFC-LCAF-09-8Y-12-PACK	LC-APC	OS2	0.25/0.9 mm	Green	12/pack
760243390	SFC-LCAF-20-8Y-12-PACK	LC-APC	OS2	1.6/2.0 mm	Green	12/pack
760243391	MFC-SCF-09-5Y-12-PACK	SC	OM3/4/5	0.25/0.9 mm	Aqua	12/pack
760243392	MFC-SCF-20-5Y-12-PACK	SC	OM3/4/5	1.6/2.0 mm	Aqua	12/pack
760243393	MFC-SCF-30-5Y-12-PACK	SC	OM3/4/5	3.0 mm	Aqua	12/pack
760243394	SFC-SCF-09-8Y-12-PACK	SC-UPC	OS2	0.25/0.9 mm	Blue	12/pack
760243395	SFC-SCF-20-8Y-12-PACK	SC-UPC	OS2	1.6/2.0 mm	Blue	12/pack
760243396	SFC-SCF-30-8Y-12-PACK	SC-UPC	OS2	3.0 mm	Blue	12/pack
760243397	SFC-SCAF-09-8Y-12-PACK	SC-APC	OS2	0.25/0.9 mm	Green	12/pack
760243398	SFC-SCAF-20-8Y-12-PACK	SC-APC	OS2	1.6/2.0 mm	Green	12/pack
760243399	SFC-SCAF-30-8Y-12-PACK	SC-APC	OS2	3.0 mm	Green	12/pack
760243402	Qwik-Fuse Termination Tool Kit, LC, SC (for splice-on connector termination)					
760243403	Qwik-Fuse Installer Tool Kit, LC, SC, with Installer fusion splicer and termination tools					
760244684	Qwik-Fuse cord tool, 1.6, 2.0, 3.0 mm					
760243576	Installer fusion splicer					
760243617	Qwik-Fuse fiber holder, tight buffer and cordage (for use with Qwik-Fuse Installer and many AFL and Sumitomo splicers)					
760244521	Qwik-Fuse fiber holder, loose buffer and 250µm fiber (for use with Qwik-Fuse Installer and many AFL and Sumitomo splicers)					
760244706	Qwik-Fuse fiber holder, Fitel, set					
760245135	Qwik-Fuse connector duplex clip, LC, 10 per pack					
760245136	Qwik-Fuse connector duplex clip, SC, 10 per pack					

Field Installable Products



QWIK-FUSE FIELD-INSTALLABLE MPO CONNECTORS

Material ID	Description	Connector	Fiber	Cable	Housing color	Performance	Package
760251300	MFC-12MX-5SP-30-AQ	MPO-PC Pinned	OM3/4/5	12f round, 3.0 mm	Aqua	Standard Loss	Single
760251299	MFC-12MP-5SP-30-AQ	MPO-PC Unpinned	OM3/4/5	12f round, 3.0 mm	Aqua	Standard Loss	Single
760251294	MFC-12MX-5SP-RN-AQ	MPO-PC Pinned	OM3/4/5	12 f ribbon, no jacket	Aqua	Standard Loss	Single
760251293	MFC-12MP-5SP-RN-AQ	MPO-PC Unpinned	OM3/4/5	12 f ribbon, no jacket	Aqua	Standard Loss	Single
760251292	MFC-12MX-5SP-RC-AQ	MPO-PC Pinned	OM3/4/5	12 f ribbon, with jacket	Aqua	Standard Loss	Single
760251291	MFC-12MP-5SP-RC-AQ	MPO-PC Unpinned	OM3/4/5	12 f ribbon, with jacket	Aqua	Standard Loss	Single
760248909	MFC-8MX-5SP-30-AQ	MPO-PC Pinned	OM3/4/5	8f round, 3.0 mm	Aqua	Standard Loss	Single
760248910	MFC-8MP-5SP-30-AQ	MPO-PC Unpinned	OM3/4/5	8f round, 3.0 mm	Aqua	Standard Loss	Single
760248915	MFC-8MX-5SP-RN-AQ	MPO-PC Pinned	OM3/4/5	8f ribbon, no jacket	Aqua	Standard Loss	Single
760248916	MFC-8MP-5SP-RN-AQ	MPO-PC Unpinned	OM3/4/5	8f ribbon, no jacket	Aqua	Standard Loss	Single
760248917	MFC-8MX-5SP-RC-AQ	MPO-PC Pinned	OM3/4/5	8f ribbon, with jacket	Aqua	Standard Loss	Single
760248918	MFC-8MP-5SP-RC-AQ	MPO-PC Unpinned	OM3/4/5	8f ribbon, with jacket	Aqua	Standard Loss	Single
760251302	SFC-12MX-8SP-30-GR	MPO-APC Pinned	OS2	12f round, 3.0 mm	Green	Standard Loss	Single
760251301	SFC-12MP-8SP-30-GR	MPO-APC Unpinned	OS2	12f round, 3.0 mm	Green	Standard Loss	Single
760251298	SFC-12MX-8SP-RN-GR	MPO-APC Pinned	OS2	12f round, no jacket	Green	Standard Loss	Single
760251297	SFC-12MP-8SP-RN-GR	MPO-APC Unpinned	OS2	12f round, no jacket	Green	Standard Loss	Single
760251296	SFC-12MX-8SP-RC-GR	MPO-APC Pinned	OS2	12f round, with jacket	Green	Standard Loss	Single
760251295	SFC-12MP-8SP-RC-GR	MPO-APC Unpinned	OS2	12f round, with jacket	Green	Standard Loss	Single
760249953	SFC-12MP-8LL-30-YL	MPO-PC Unpinned	OS2	12f round, 3.0 mm	Yellow	Low Loss	Single
760249954	SFC-12MP-8LL-RN-YL	MPO-PC Unpinned	OS2	12 f ribbon, no jacket	Yellow	Low Loss	Single
760249955	SFC-12MP-8LL-RC-YL	MPO-PC Unpinned	OS2	12f round, with jacket	Yellow	Low Loss	Single
760249956	SFC-12MX-8LL-30-YL	MPO-PC Pinned	OS2	12f round, 3.0 mm	Yellow	Low Loss	Single
760249957	SFC-12MX-8LL-RN-YL	MPO-PC Pinned	OS2	12 f ribbon, no jacket	Yellow	Low Loss	Single
760249958	SFC-12MX-8LL-RC-YL	MPO-PC Pinned	OS2	12f round, with jacket	Yellow	Low Loss	Single

QWIK-FUSE MPO TOOL KIT

Material ID	Description
760188698	Qwik MPO connector termination tool kit (Includes: Assembly platform, ferrule holder, jacket stripper/slitting tool, ribbonizing tool, ribbonizing glue, magnifier, marker, instructions, and soft case)

Field Installable Products

QWIK II connector tool kits consist of all tools and accessories required to ensure fast, consistent and optimal termination. The premium tool kit includes a high-precision cleaver with auto-rotation blade and a handheld visual fault identifier (VFI) for the confirmation of proper termination.



QWIK II FIELD-INSTALLABLE CONNECTORS

Material ID	Description	Connector	Fiber	Cable	Housing color	Package
760117887	MFC-LCF-09-5X	LC	OM3/4/5	0.25/0.9 mm	Aqua	Single
760242343	MFC-LCF-UNV-5X*	LC	OM3/4/5	0.25/0.9/2.0/3.0 mm	Aqua	Single
760117903	MFC-LCF-09-6X	LC	OM1	0.25/0.9 mm	Beige	Single
760117895	SFC-LCF-09-8X	LC-UPC	OS2	0.25/0.9 mm	Blue	Single
760242344	SFC-LCF-UNV-8X*	LC-UPC	OS2	0.25/0.9/2.0/3.0 mm	Blue	Single
760242345	SFC-LCAF-UNV-8X*	LCAPC	OS2	0.25/0.9/2.0/3.0 mm	Green	Single
760184697	SFC-LCF-09-8A-25-PACK	LC-APC	OS2	0.25/0.9 mm	Green	25/pack
760117945	MFC-SCF-09-5X	SC	OM3/4/5	0.25/0.9 mm	Aqua	Single
760242346	MFC-SCF-UNV-5X*	SC	OM3/4/5	0.25/0.9/2.0/3.0 mm	Aqua	Single
760117960	MFC-SCF-09-6X	SC	OM1	0.25/0.9 mm	Beige	Single
760117952	SFC-SCF-09-8X	SC-UPC	OS2	0.25/0.9 mm	Blue	Single
760242347	SFC-SCF-UNV-8X*	SC-UPC	OS2	0.25/0.9/2.0/3.0 mm	Blue	Single
760184689	SFC-SCF-09-8A-25-PACK	SC-APC	OS2	0.25/0.9 mm	Green	25/pack
760118000	MFC-STF-09-5X	ST	OM3/4/5	0.25/0.9 mm	Aqua	Single
760118026	MFC-STF-09-6X	ST	OM1	0.25/0.9 mm	Beige	Single
760118018	SFC-STF-09-8X	ST-UPC	OS2	0.25/0.9 mm	Blue	Single

QWIK II CONNECTOR TOOL KIT COMPONENTS

Component	Qwik II termination kit (760242377)	Qwik II termination kit, premium (760248225)
Premium Case	√	√
0.9 mm cable clamp	√	√
2.0 mm cable clamp		√
3.0 mm cable clamp		√
Visual fault identifier (VFI)		√
High-precision fiber cleaver		√
Precision fiber cleaver	√	
Fiber stripper, 3-hole	√	√
Cutter, Kevlar	√	√
Marker, Sharpie	√	√
Fiber prep fluid	√	√
Fiber wipes	√	√
Termination instruction	√	√



QWIK II CONNECTOR TOOL KITS AND ACCESSORIES

Material ID	Description
760242377	Qwik II connector termination tool kit
760248225	Qwik II connector termination tool kit, premium
760243353	Replacement blade for high-precision cleaver
760249056	Optical Fiber Visual Fault Locator
760249518	High-precision Fiber Cleaver
760243349	Fiber clamp, buffer tube, 900 µm
760243350	Fiber clamp, 2.0 mm
760243351	Fiber clamp, 3.0 mm
760243081	Qwik II LC duplex clip, 6 per pack

Field Installable Products

Anaerobic Connectors are epoxy and polish connectors that use anaerobic quick cure adhesive technology.



ANAEROBIC FIBER OPTIC CONNECTORS						
Mode	Connector	Polish	Cable (mm)	Simplex	Duplex	Bulk pack 100 pcs simplex
SM	SC	UPC	0.9	SFC-SCR-09-BL		SFC-SCR-09-BL-100-BULK-PACK
SM	SC	UPC	1.6	SFC-SCR-16-BL	SDC-SCR-16-BL	
SM	SC	UPC	3.0	SFC-SCR-30-BL	SDC-SCR-30-BL	
SM	SC	APC	0.9	SFC-SC/APC-09-GR		
SM	SC	APC	1.6	SFC-SC/APC-16-GR		
SM	SC	APC	3.0	SFC-SC/APC-30-GR		
MM	SC	UPC	0.9	MFC-SCR-09-BG		
MM	SC	UPC	1.6	MFC-SCR-16-BG	MDC-SCR-16-BG	
MM	SC	UPC	3.0	MFC-SCR-30-BG	MDC-SCR-30-BG	
SM	LC	UPC	0.9	SFC-LCR-09-BL		SFC-LCR-09-BL-100-BULK-PACK
SM	LC	UPC	1.6	SFC-LCR-16-BL	SDC-LCR-16-BL	
SM	LC	UPC	3.0	SFC-LCR-30-BL	SDC-LCR-30-BL	
SM	LC	APC	0.9	SFC-LC/APC-09-GR		
SM	LC	APC	1.6	SFC-LC/APC-16-GR	SDC-LC/APC-16-GR	
SM	LC	APC	3.0	SFC-LC/APC-30-GR		
MM	LC	UPC	0.9	MFC-LCR-09-BG		MFC-LCR-09-BG-100-BULK-PACK
MM	LC	UPC	1.6	MFC-LCR-16-BG	MDC-LCR-16-BG	
MM	LC	UPC	3.0	MFC-LCR-30-BG	MDC-LCR-30-BG	

Field Installable Products



ADAPTERS		
Material ID	Product Number	Description
760056002	MFA-LC02-AQ/LP-SHUTTERED	LC Duplex Low Profile Shuttered Adapter, Aqua, Single Pack
760115212	MFA-LC02-AQ/LP	LC Duplex Low Profile Adapter, Aqua, Single Pack
760115220	MFA-LC02-BG/LP	LC Duplex Low Profile Adapter, Beige, Single Pack
760056010	MFA-LC02-BG/LP-SHUTTERED	LC Duplex Low Profile Shuttered Adapter, Beige, Single Pack
760056036	AFA-LC02-GR/LP-SHUTTERED	LC-APC Duplex Low Profile Shuttered Adapter, Green, Single Pack
760115246	AFA-LC02-GR/LP	LC-APC Duplex Low Profile Adapter, Green, Single Pack
760056028	SFA-LC02-BL/LP-SHUTTERED	LC Duplex Low Profile Shuttered Adapter, Blue, Single Pack
760115238	SFA-LC02-BL/LP	LC Duplex Low Profile Adapter, Blue, Single Pack
760115626	MFA-SC02-BG-FLANGELESS	SC Duplex Flangeless Adapter, Beige, Single Pack
108223181	MFA-SC01-BG	SC Simplex Adapter, Beige, Single Pack
108622895	MFA-SC02-AQ	SC Duplex Adapter, Aqua, Single Pack
700004880	MFA-SC02-BG	SC Duplex Adapter, Beige, Single Pack
760115543	MFA-SC01-AQ	SC Simplex Adapter, Aqua, Single Pack
760115568	MFA-SC01-BG-FLANGELESS	SC Simplex Flangeless Adapter, Beige, Single Pack
760115592	MFA-SC01-AQ-FLANGELESS	SC Simplex Flangeless Adapter, Aqua, Single Pack
760115600	MFA-SC02-AQ-FLANGELESS	SC Duplex Flangeless Adapter, Aqua, Single Pack
760036285	AFA-SC02-GR	SC-APC Duplex Adapter, Green, Single Pack
760115675	AFA-SC02-GR-FLANGELESS	SC-APC Duplex Flangeless Adapter, Green, Single Pack
700004815	SFA-SC02-BL	SC Duplex Adapter, Blue, Single Pack
760115642	SFA-SC02-BL-FLANGELESS	SC Duplex Flangeless Adapter, Blue, Single Pack

Field Installable Products



FIBER CLEANING/INSPECTION KITS

Material ID	Description
760053207	Cleaning Consumables Kit, Fiber Optic
760053199	Cleaning and Inspection Kit, Fiber Optic



FIBER BREAK-OUT KITS

Material ID	Description
760018820	6 Fiber Breakout kit, loose tube, 24 inch, indoor
760018838	12 Fiber Breakout kit, loose tube, 24 inch, indoor
108459488	2 x 12 Fiber Breakout Kit, outside plant, gel blocking



CONSUMABLES

Material ID	Description
501857-2	Alcohol wipes
1457630-1	Curing sleeve; Used with: LC 900 µm, 12 pack
502656-1	Curing sleeve; Used with: SC Connectors



FIBER CABLE CLAMPS

Material ID	Product Number	Description
700025653	12A2 Clamp	Grounding Clamp Kit, non-metallic sheath cable
700025513	12A1 CLAMP	Grounding Clamp Kit, metallic sheath cable



The FiberGuide® fiber management systems offers the greatest breadth of optical raceway products in the industry. It is designed to protect and route fiber optic patch cords, multi-fiber cable assemblies and intrafacility fiber cable (IFC) to and from fiber splice enclosures, fiber distribution frames and fiber optic terminal devices.

Tool-less, Snap-Fit™ junctions, cover options significantly reduce the amount of time required for installation. Fiberguide is available in a variety of sizes and basic components include horizontal and vertical straight sections, horizontal and vertical elbows, downspouts, junctions and numerous support hardware and flex-tube kits.

Available in a variety of sizes: 2x2, 2x6, 4x4, 4x6, 4x12 and 4x24. Below is a selection of our 4x12 system. For more sizes and options, [please download the full catalog.](#)

STRAIGHT SECTIONS & FITTINGS			
DESCRIPTION	100mm x 100mm	100mm x 150mm	100mm x 300mm
Straight Section Horizontal - L= 1,83 mtr	FGS-MSHS-A	FGS-MSHS-B	FGS-MSHS-F
Straight Section Cover	FGS-MSNC-A	FGS-MSNC-B/G	FGS-MSNC-F
Horizontal Cross	FGS-MHXP-A	FGS-MHXP-B	FGS-MHXP-F
Horizontal Cross Cover	FGS-SHXP-A	FGS-SHXP-B	FGS-SHXP-F
T-adapter -Horizontal	FGS-MHRT-A	FGS-MHRT-B	FGS-MHRT-F
90° Elbow - Horizontal	FGS-MH9E-A	FGS-MH9E-B	FGS-MH9E-F
90° Elbow Vertical - Up With Cover	FGS-MU9E-A	FGS-MU9E-B	
90° Elbow Vertical - Up			FGS-MU4E-F
90° Elbow Vertical - Down	FGS-MD9E-A	FGS-MD9E-B	FGS-MD9E-F
45° Elbow - Horizontal	FGS-MH4E-A	FGS-MH4E-B	FGS-MH4E-F
45° Elbow Vertical - Up With Cover	FGS-MU4E-A	FGS-MU4E-B	FGS-MU4E-F
45° Elbow Vertical - Down	FGS-MD4E-A	FGS-MD4E-B	FGS-MD4E-F
Trumpet Flare	FGS-MTRM-A	FGS-MTRM-B	FGS-MTRM-F
End Cap	FGS-HMEC-A	FGS-HMEC-B	FGS-HMEC-F

JUNCTIONS			
DESCRIPTION	100mm x 100mm	100mm x 150mm	100mm x 300mm
Junctions/Joiners	FGS-MFAW-A	FGS-MFAW-B	FGS-MFAW-F

FIXED DOWNSPOUTS			
DESCRIPTION	100mm x 100mm	100mm x 150mm	100mm x 300mm
4* inch Downspout kit (4-inch Exit)	FGS-MDSP-A	FGS-MDSP-B	FGS-MDSP-F
Cover	FGS-MCDS-AB	FGS-MCDS-AB	FGS-SDSP-F

EXPRESS EXIT DOWNSPOUTS

DESCRIPTION	100mm x 100mm	100mm x 150mm	100mm x 300mm
2-Inch Express Exit™ for 4 x 4, 4 x 6 and 4 x 12 Raceway	FGS-MEXP-A/B/F	FGS-MEXP-A/B/F	FGS-MEXP-A/B/F
2-Inch Low-profile Express Exit™ for 4 x 4, 4 x 6 and 4 x 12 Raceway	FGS-MEXP-LP-A/B/F	FGS-MEXP-LP-A/B/F	FGS-MEXP-LP-A/B/F
4-Inch Express Exit™ for 4 x 4, 4 x 6 and 4 x 12 Raceway	FGS-MEXP-E-A/B/F	FGS-MEXP-E-A/B/F	FGS-MEXP-E-A/B/F
Express Exit Rear Hinged Cover for 4 x 12 Raceway, Yellow			FGS-MEXC-E-F

DOWNSPOUT ACCESSORIES

DESCRIPTION	100mm x 100mm	100mm x 150mm	100mm x 300mm
2-inch Trumpet - bend radius limiter	FGS-MTRM-C		
4-inch Trumpet - bend radius limiter	FGS-MTRM-A		
Single 2" Flex Tube Attachment, 2x2 inch	FGS-MEX1-C-0F	FGS-MEX1-C-0F	FGS-MEX1-C-0F
Single 2" Flex Tube Attachment, 4x4 inch	FGS-KT03-A1NH	FGS-KT03-A1NH	FGS-KT03-A1NH
Dual 2" Flex Tube Attachment, 4x4 inch	FGS-KT03-ANH	FGS-KT03-ANH	FGS-KT03-ANH
Dual 2" flex tube attachment	FGS-KT03-B-0F	FGS-KT03-B-0F	FGS-KT03-B-0F
FiberGuide® 2" Flex Tube, slotted, yellow (x= length in feet 5, 10, 15, 20, 25, 30, 35, 40, 45, 50....)	FGS-MIDY-xF	FGS-MIDY-xF	FGS-MIDY-xF

C-BRACKET FOR THREADED RODS

DESCRIPTION	100mm x 100mm	100mm x 150mm	100mm x 300mm
C- Bracket for 4 & 6-inch Straight Section - Threaded Rod M12	FGS-HNTS-12mm	FGS-HNTS-12mm	
4 x 4, 4 x 6, New Threaded Rod bracket 12 mm	FGS-HNTR-12mm	FGS-HNTR-12mm	
C- Bracket for 12-inch Straight Section - Threaded Rod M16			FGS-HNTS-F-16mm
4 x 12, Trapeze support bracket 12 mm			FGS-HNTP-F-12mm

TOOLS

DESCRIPTION	100mm x 100mm	100mm x 150mm	100mm x 300mm
Mitre Box with Saw for 2-4-6 & 12-inch Straight Section	FGS-MKIT-ABF	FGS-MKIT-ABF	FGS-MKIT-ABF

Tenio fiber closures

Campus fiber networks include runs between buildings that often require splicing hardware beyond the fiber panel. These can include entrance cabinets for applications inside the building or enclosures for applications in the outside plant. CommScope offers a full portfolio of splicing hardware solutions including rack mount panels, entrance cabinets, and enclosures.

CommScope's TENIO closures feature modular building blocks and combine proven fiber management hardware with a new sealing system to simplify training. The closure's 100-percent mechanical, tool-less and intuitive design facilitates lower-skilled network deployments in any environment (aerial, pedestal, handhole, manhole).



Material ID	Product Number	Description
CV6319-000	TENIO-B6-NT-0-N	Tenio Small Fiber Optic Splice Closure up to 144 fibers
CV5889-000	TENIO-B6-TRAY-S12	Splice Tray for Tenio Small Fiber Closure for max 12 splices each
EH0465-000	TENIO-C6H-NT-0-N	Tenio Large Fiber Optic Splice Closure up to 288 fibers
EH0460-000	TENIO-C6H-TRAY-SLE	Splice tray for Tenio Large Fiber Closure for max 24 splices each
760244933	CTU-L	Fiber Closure Cable Termination Unit, Large for up to 16 mm diameter cables
760244932	CTU-S	Fiber Closure Cable Termination Unit, Small for up to 7 mm diameter cables
CW6449-000	TENIO-EXT/CF	Tenio External Cable Fixation Bracket
CW6452-000	TENIO-MOBRA	Tenio Wall Mounting Bracket
CW6504-000	TENIO-SKG2-11/14	Tenio Cable Gel Seal Kit, 2 cable outlets, 11 to 14 mm diameter per cable outlet
CW6618-000	TENIO-SKG2-13/16	Tenio Cable Gel Seal Kit, 2 cable outlets, 13 to 16 mm diameter per cable outlet
CW6617-000	TENIO-SKG2-9/12	Tenio Cable Gel Seal Kit, 2 cable outlets, 9 to 12 mm diameter per cable outlet
EH1674-000	TENIO-SKG3-3/5X6/9	Tenio Cable Gel Seal Kit, 3 flat cable outlets, 3/5 mm x 6/9 mm diameter per cable outlet
CV6799-000	TENIO-SKG3-5/8	Tenio Cable Gel Seal Kit, 3 cable outlets, 5 to 8 mm diameter per cable outlet
CV6797-000	TENIO-SKG3-7/10	Tenio Cable Gel Seal Kit, 3 cable outlets, 7 to 10 mm diameter per cable outlet
CW6616-000	TENIO-SKG4-3/6	Tenio Cable Gel Seal Kit, 4 cable outlets, 3 to 6 mm diameter per cable outlet
CW6615-000	TENIO-SKG5-2/4	Tenio Cable Gel Seal Kit, 4 cable outlets, 2 to 4 mm diameter per cable outlet
CW8862-000	TENIO-SKG-DUMMY	Tenio Gel Seal Kit, dummy, no cable outlets, black

Powered fiber

CommScope's Powered Fiber Cable System simplifies the addition of new small cells, Wi-Fi access points and IP cameras by distributing power and fiber within the same cable. This allows network operators to locate remote devices anywhere they can run fiber cable. What's more, by providing the necessary DC power alongside optical fiber signals, the Powered Fiber Cable System allows networks to deliver low voltage power from a centralized source without the need of installing extra conduits, transformers or remote uninterrupted power supplies (UPS).



POWERED FIBER CABLE SYSTEM

Description	Part Number
Powered Fiber Cable, Indoor/Outdoor, OS2, 2 Fibers, 2 x 12 AWG Conductors	PFC-S02L12
Powered Fiber Cable, Indoor/Outdoor, OS2, 2 Fibers, 2 x 16 AWG Conductors	PFC-S02L16
Powered Fiber Cable, Outdoor, OS2, 2 Fibers, 2 x 12 AWG Conductors	PFC-S02O12
Powered Fiber Cable, Outdoor, OS2, 2 Fibers, 2 x 16 AWG Conductors	PFC-S02O16
Powered Fiber Cable, Indoor/Outdoor, OS2, 4 Fibers, 2 x 12 AWG Conductors	PFC-S04L12
Powered Fiber Cable, Indoor/Outdoor, OS2, 4 Fibers, 2 x 16 AWG Conductors	PFC-S04L16
Powered Fiber Cable, Outdoor, OS2, 4 Fibers, 2 x 12 AWG Conductors	PFC-S04O12
Powered Fiber Cable, Outdoor, OS2, 4 Fibers, 2 x 16 AWG Conductors	PFC-S04O16
Powered Fiber Cable, Indoor/Outdoor, OS2, 12 Fibers, 2 x 12 AWG Conductors	PFC-S12L12
Powered Fiber Cable, Indoor/Outdoor, OS2, 2 Fibers, 12 x 16 AWG Conductors	PFC-S12L16
Powered Fiber Cable, Outdoor, OS2, 12 Fibers, 2 x 12 AWG Conductors	PFC-S12O12
Powered Fiber Cable, Outdoor, OS2, 12 Fibers, 2 x 16 AWG Conductors	PFC-S12O16
Powered Fiber Cable, Indoor/Outdoor, OM3, 2 Fibers, 2 x 12 AWG Conductors	PFC-302L12
Powered Fiber Cable, Indoor/Outdoor, OM3, 2 Fibers, 2 x 16 AWG Conductors	PFC-302L16
Powered Fiber Cable, Outdoor, OM3, 2 Fibers, 2 x 12 AWG Conductors	PFC-302O12
Powered Fiber Cable, Outdoor, OM3, 2 Fibers, 2 x 16 AWG Conductors	PFC-302O16
Powered Fiber Cable, Indoor/Outdoor, OM3, 4 Fibers, 2 x 12 AWG Conductors	PFC-304L12
Powered Fiber Cable, Indoor/Outdoor, OM3, 4 Fibers, 2 x 16 AWG Conductors	PFC-304L16
Powered Fiber Cable, Outdoor, OM3, 4 Fibers, 2 x 12 AWG Conductors	PFC-304O12
Powered Fiber Cable, Outdoor, OM3, 4 Fibers, 2 x 16 AWG Conductors	PFC-304O16

Powered fiber



PLENUM ROUND POWERED FIBER CABLE

Material ID	Product Number	Description
12 AWG		
760250282	P-002-DS-HY-8W-F29YL/2X12AWG	Plenum Hybrid Distribution Cable, 2 simplex single fiber, 2 conductor 12 AWG, Singlemode
760250283	P-002-DS-HY-5L-F29AQ/2X12AWG	Plenum Hybrid Distribution Cable, 2 simplex single fiber, 2 conductor 12 AWG, OM3 Bend Insensitive
760250284	P-002-DS-HY-5K-F29AQ/2X12AWG	Plenum Hybrid Distribution Cable, 2 simplex single fiber, 2 conductor 12 AWG, OM4 Bend Insensitive
760250285	P-004-DS-HY-8W-F29YL/2X12AWG	Plenum Hybrid Distribution Cable, 4 simplex single fiber, 2 conductor 12 AWG, Singlemode
760250286	P-004-DS-HY-5L-F29AQ/2X12AWG	Plenum Hybrid Distribution Cable, 4 simplex single fiber, 2 conductor 12 AWG, OM3 Bend Insensitive
760250287	P-004-DS-HY-5K-F29AQ/2X12AWG	Plenum Hybrid Distribution Cable, 4 simplex single fiber, 2 conductor 12 AWG, OM4 Bend Insensitive
760250288	P-002-DS-HY-8W-F29YL/4X12AWG	Plenum Hybrid Distribution Cable, 2 simplex single fiber, 4 conductor 12 AWG, Singlemode
760250289	P-002-DS-HY-5L-F29AQ/4X12AWG	Plenum Hybrid Distribution Cable, 2 simplex single fiber, 4 conductor 12 AWG, OM3 Bend Insensitive
760250290	P-002-DS-HY-5K-F29AQ/4X12AWG	Plenum Hybrid Distribution Cable, 2 simplex single fiber, 4 conductor 12 AWG, OM4 Bend Insensitive
760250291	P-004-DS-HY-8W-F29YL/4X12AWG	Plenum Hybrid Distribution Cable, 4 simplex single fiber, 4 conductor 12 AWG, Singlemode
760250292	P-004-DS-HY-5L-F29AQ/4X12AWG	Plenum Hybrid Distribution Cable, 4 simplex single fiber, 4 conductor 12 AWG, OM3 Bend Insensitive
760250293	P-004-DS-HY-5K-F29AQ/4X12AWG	Plenum Hybrid Distribution Cable, 4 simplex single fiber, 4 conductor 12 AWG, OM4 Bend Insensitive
16 AWG		
760250294	P-002-DS-HY-8W-F18YL/2X16AWG	Plenum Hybrid Distribution Cable, 2 simplex single fiber, 2 conductor 16 AWG, Singlemode
760250295	P-002-DS-HY-5L-F18AQ/2X16AWG	Plenum Hybrid Distribution Cable, 2 simplex single fiber, 2 conductor 16 AWG, OM3 Bend Insensitive
760250296	P-002-DS-HY-5K-F18AQ/2X16AWG	Plenum Hybrid Distribution Cable, 2 simplex single fiber, 2 conductor 16 AWG, OM4 Bend Insensitive
760250297	P-004-DS-HY-8W-F18YL/2X16AWG	Plenum Hybrid Distribution Cable, 4 simplex single fiber, 2 conductor 16 AWG, Singlemode
760250298	P-004-DS-HY-5L-F18AQ/2X16AWG	Plenum Hybrid Distribution Cable, 4 simplex single fiber, 2 conductor 16 AWG, OM3 Bend Insensitive
760250299	P-004-DS-HY-5K-F18AQ/2X16AWG	Plenum Hybrid Distribution Cable, 4 simplex single fiber, 2 conductor 20 AWG, OM4 Bend Insensitive
760250300	P-002-DS-HY-8W-F18YL/4X16AWG	Plenum Hybrid Distribution Cable, 2 simplex single fiber, 4 conductor 16 AWG, Singlemode
760250301	P-002-DS-HY-5L-F18AQ/4X16AWG	Plenum Hybrid Distribution Cable, 2 simplex single fiber, 4 conductor 16 AWG, OM3 Bend Insensitive
760250302	P-002-DS-HY-5K-F18AQ/4X16AWG	Plenum Hybrid Distribution Cable, 2 simplex single fiber, 4 conductor 16 AWG, OM4 Bend Insensitive
760250303	P-004-DS-HY-8W-F18YL/4X16AWG	Plenum Hybrid Distribution Cable, 4 simplex single fiber, 4 conductor 16 AWG, Singlemode
760250304	P-004-DS-HY-5L-F18AQ/4X16AWG	Plenum Hybrid Distribution Cable, 4 simplex single fiber, 4 conductor 16 AWG, OM3 Bend Insensitive
760250305	P-004-DS-HY-5K-F18AQ/4X16AWG	Plenum Hybrid Distribution Cable, 4 simplex single fiber, 4 conductor 16 AWG, OM4 Bend Insensitive
20 AWG		
760250306	P-002-DS-HY-8W-F16YL/2X20AWG	Plenum Hybrid Distribution Cable, 2 simplex single fiber, 2 conductor 20 AWG, Singlemode
760250307	P-002-DS-HY-5L-F16AQ/2X20AWG	Plenum Hybrid Distribution Cable, 2 simplex single fiber, 2 conductor 20 AWG, OM3 Bend Insensitive Fiber
760250308	P-002-DS-HY-5K-F16AQ/2X20AWG	Plenum Hybrid Distribution Cable, 2 simplex single fiber, 2 conductor 20 AWG, OM4 Bend Insensitive Fiber
760250309	P-004-DS-HY-8W-F16YL/2X20AWG	Plenum Hybrid Distribution Cable, 4 simplex single fiber, 2 conductor 20 AWG, Singlemode
760250310	P-004-DS-HY-5L-F16AQ/2X20AWG	Plenum Hybrid Distribution Cable, 4 simplex single fiber, 2 conductor 20 AWG, OM3 Bend Insensitive
760250311	P-004-DS-HY-5K-F16AQ/2X20AWG	Plenum Hybrid Distribution Cable, 4 simplex single fiber, 2 conductor 20 AWG, OM4 Bend Insensitive
760250312	P-002-DS-HY-8W-F16YL/4X20AWG	Plenum Hybrid Distribution Cable, 2 simplex single fiber, 4 conductor 20 AWG, Singlemode
760250313	P-002-DS-HY-5L-F16AQ/4X20AWG	Plenum Hybrid Distribution Cable, 2 simplex single fiber, 4 conductor 20 AWG, OM3 Bend Insensitive
760250314	P-002-DS-HY-5K-F16AQ/4X20AWG	Plenum Hybrid Distribution Cable, 2 simplex single fiber, 4 conductor 20 AWG, OM4 Bend Insensitive
760250315	P-004-DS-HY-8W-F16YL/4X20AWG	Plenum Hybrid Distribution Cable, 4 simplex single fiber, 4 conductor 20 AWG, Singlemode
760250316	P-004-DS-HY-5L-F16AQ/4X20AWG	Plenum Hybrid Distribution Cable, 4 simplex single fiber, 4 conductor 20 AWG, OM3 Bend Insensitive
760250317	P-004-DS-HY-5K-F16AQ/4X20AWG	Plenum Hybrid Distribution Cable, 4 simplex single fiber, 4 conductor 20 AWG, OM4 Bend Insensitive

Powered fiber

1 AND 2 PORT EXTENDERS

Material ID	Description
PFU-P-C-O-060-02	60W, 2 Port PoE Extender*
PFU-P-E-O-060-01	60W, 1 Port 5 Gbps PoE Extender

*The 60W, 2-port PoE Extender provides a maximum of 30W on each port.



POWER EXTENDERS/FIBER PASS-THRU

Material ID	Description
PFU-48-C-O-060-01	Power Extender, Universal Mount, Outdoor, 48 Vdc, Fiber Pass Through
PFU-12-C-O-060-01	Power Extender, Universal Mount, Outdoor, 12 Vdc, Fiber Pass Through
PFU-P-C-O-060-02	PoE Extender, 2 Port Universal Mount, Outdoor, 2-Port
PFU-P-C-O-060-01	PoE Extender, Universal Mount, Outdoor, 1-Port



POWER SUPPLY

Material ID	Description
PFP-PX-8M	Power Express Distribution module supports max. 8 Devices
PFP-PX-S1	Power Express Distribution shelf with alarm module
PFP-PX-SF	Power Express Blank Slot Panel
PFP-SPS-1600M	1600W SPS Power Rectifier module
PFP-SPS-C1	SPS Rectifier Controller Display
PFP-SPS-S1	SPS Rectifier Power Distribution Shelf
PFP-SPS-SF	SPS Rectifier Blank Slot Panel



SURFACE MOUNT BOXES

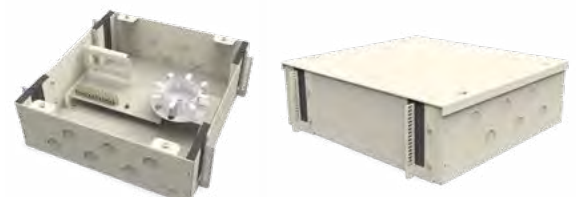
Material ID	Description
760248944	Kit, SMB, 1 Fiber Port, 1 Power Port, Beige
760248943	Kit, SMB, 1 Fiber Port, 1 Power Port, White
760248942	Kit, SMB, 1 Fiber Port, 1 Power Port, Black
760249095	Kit, SMB, 2 Fiber Ports, 2 Power Ports, Beige
760249094	Kit, SMB, 2 Fiber Ports, 2 Power Ports, White
760249093	Kit, SMB, 2 Fiber Ports, 2 Power Ports, Black



Plenum Powered Fiber Cable Transition Box

PLENUM POWERED FIBER CABLE TRANSITION BOX

Material ID	Description
760250853	PFC Transition Box, Plenum rated, cool gray



BUDI splice with FIST

BUDI is a product range of compact, wall mountable fiber enclosures for indoor and outdoor use. They are specifically designed for fast deployment and easy customer connection. The FIST management system is a proven CommScope technology for optimal fiber organization and splicing.

Available with splicing and/or patching capabilities, high connector density, small and larger footprints, the BUDI product range offers flexible solutions for a wide range of applications in the access network.

BENEFITS

- Easy to install
- Compact and flexible design
- Extensive product range
- Proven FIST fiber management system

FEATURES

- Designed to operate in category C (controlled), category G (outdoor ground level) and category A (aerial) as characterized by IEC 61753-1
- Fire retardant, LSZH materials
- UV stable material for outdoor above ground use
- Multiple cable ports available
- Bottom cable seal blocks are wrap-around
- UMS (Universal Mounting System) available to mount FIST-SOSA2 splice modules
- Allows integration of passive optical components
- Small and large footprints
- Multiple accessories available to terminate and seal different cable types
- Removable enclosure lid



Features	Type of BUDI			
	BUDI-2S	BUDI-1S	BUDI-S	BUDI-M
UMS	6	16	28	36
Splices (single element) (up to 12 splices per tray)	36	96	168	216
Splices (single circuit) (up to 2 splices per tray)	12	32	56	72
Cable loop	No	Yes	Yes	Yes
Lock	Lead Wire	Key	Key	Key
FSASA splitter integration	No	Yes	Yes	Yes

CommScope pushes the boundaries of communications technology with game-changing ideas and ground-breaking discoveries that spark profound human achievement. We collaborate with our customers and partners to design, create and build the world's most advanced networks. It is our passion and commitment to identify the next opportunity and realize a better tomorrow. Discover more at commscope.com

COMMSCOPE®

commscope.com

Visit our website or contact your local CommScope representative for more information.

© 2022 CommScope, Inc. All rights reserved.

Unless otherwise noted, all trademarks identified by ® or ™ are registered trademarks, respectively, of CommScope, Inc. This document is for planning purposes only and is not intended to modify or supplement any specifications or warranties relating to CommScope products or services. CommScope is committed to the highest standards of business integrity and environmental sustainability with a number of CommScope's facilities across the globe certified in accordance with international standards, including ISO 9001, TL 9000, and ISO 14001. Further information regarding CommScope's commitment can be found at www.commscope.com/About-Us/Corporate-Responsibility-and-Sustainability.

CO-1121359-EN GB (02/22)